



Narrows Point Plant Asset List

Table of Contents

1	Narrows Point Asset-for-Sale Summary	3
2	Narrows Point Plant Aerial Photo with Buildings and Tanks Offered for Sale	4
3	Detailed Asset Information	5
3.1	Package #1: Generator Building Package	5
3.1.1	Generator Building	5
3.1.2	Other Equipment - Balance of the Generator Building	7
3.2	Package #2: Unit 1 CUL 483 56 kW Diesel Generator Set	14
3.3	Package #3: Unit 2 CUL 429 35 kW Diesel Generator Set	17
3.4	Package #4: Unit 3 CUL 430 50 kW Diesel Generator Set	21
3.5	Package #5: Auxiliary Building Package	23
3.5.1	Auxiliary Building	23
3.5.2	Other Equipment – Balance of the Auxiliary Building	24
3.6	Package #6: Unit 4 CUL 280 60 kW Diesel Generator Set	28
3.7	Package #7: Diesel Fuel Storage Tank 1 (75,000 Litres) (Year manufactured: 2003)	33
3.8	Package #8: Diesel Fuel Storage Tank 2 (75,000 Litres) (Year manufactured: 2013)	35
3.9	Package #9: Fuel Offload Building Package	37

List of Figures

Figure 1 - Aerial Photo of Narrows Point Plant with Buildings and Fuel Tanks Offered for Sale	4
--	----------

List of Pictures

Picture 1 – Generator Building Accommodating Unit 1, 2 and 3 and Electrical Switchgear.....	5
Picture 2 – Generator Building Engine Room (The generating units are excluded from this asset package).....	6
Picture 3 – Electrical Room Switchgear Control Panels in Generator Building.....	7
Picture 4 – Feeder 1 Breaker Panel.....	7
Picture 5 – Synchronizing Panel.....	8
Picture 6 – Plant HMI.....	9
Picture 7 – Plant Main PLC.....	9
Picture 8 – Plant Auxiliary PLC Panel.....	10
Picture 9 – AC Auxiliary Panel.....	11
Picture 10 – Diesel Day Tank of Unit 1, 2 & 3 in Generator Building.....	12
Picture 11 – New and Used Oil Tank in Generator Building.....	13
Picture 12 – Unit 1 CUL 483 Generating Unit.....	15
Picture 13 – Unit 1 CUL 483 Generating Unit Nameplate.....	15
Picture 14 - Unit 1 CUL 483 Engine Control Panel, Start Battery and Battery Charger.....	16
Picture 15 – Unit 2 CUL 429 Generating Unit.....	18
Picture 16 – Unit 2 CUL 429 Generating Unit Nameplate.....	18
Picture 17 – Unit 2 CUL 429 Engine Nameplate.....	19
Picture 18 – Unit 2 CUL 429 Engine Control Panel, Start Battery and Battery Charger.....	20
Picture 19 – Unit 3 CUL 430 Generating Unit.....	22
Picture 20 – Unit 3 CUL 430 Engine Control Panel, Start Battery and Battery Charger.....	22
Picture 21 – Auxiliary Building Accommodating Unit 4.....	23
Picture 22 – Auxiliary Building – Inside (The generating unit, its control panel and breaker is excluded from this asset package as a separate package).....	24
Picture 23 – Unit 4 Diesel Day Tank in Auxiliary Building.....	25
Picture 24 – Unit 4 Oil Tank in Auxiliary Building.....	26
Picture 25 – Spare Parts Shelf 1.....	27
Picture 26 – Spare Parts Shelf 2.....	27
Picture 27 – Unit 4 CUL 280 Generating Unit.....	29
Picture 28 – Unit 4 CUL 280 Unit Breaker Panel.....	30
Picture 29 – Unit 4 CUL 280 Engine Control Panel.....	31
Picture 30 – Unit 4 CUL 280 Engine Start Battery.....	32
Picture 31 – Unit 4 CUL 280 Engine Battery Charger.....	32
Picture 32 – 75,000 Litres Diesel Fuel Storage Tank 1.....	33
Picture 33 – 75,000 Litres Diesel Fuel Storage Tank 1 Nameplate.....	34
Picture 34 – 75,000 Litres Diesel Fuel Storage Tank 1 Spill Box and Walkway.....	34
Picture 35 – 75,000 Litres Diesel Fuel Storage Tank 2.....	35
Picture 36 – 75,000 Litres Diesel Fuel Storage Tank 2 Nameplate.....	35
Picture 37 – 75,000 Litres Diesel Fuel Storage Tank 2 Spill Box and Walkway.....	36
Picture 38 – 75,000 Litres Diesel Fuel Storage Tank 2 Pump Control Panel.....	36
Picture 39 – Fuel Offload Building.....	37
Picture 40 – Fuel Offload Building – Inside.....	37

1 Narrows Point Asset-for-Sale Summary

The assets of Narrows Point plant that are offered for sale consist of the following:

- Unit 1 CUL 483: 56 kW Deutz diesel generator set with controls;
- Unit 2 CUL 429: 35 kW Deutz diesel generator set with controls;
- Unit 3 CUL 430: 50 kW Deutz diesel generator set with controls;
- Unit 4 CUL 280: 60 kW Volvo diesel generator set with controls;
- 75,000 litre diesel fuel storage tank 1;
- 75,000 litre diesel fuel storage tank 2;
- Generator Building accommodating Unit 1, 2 and 3 along with switchgear panels, fuel day tank, new and used oil tank;
- Auxiliary Building accommodating Unit 4 along with control panels, fuel day tank, spare parts and shelf;
- Fuel Offload Building.

Note: Generator Building and Auxiliary Building are skid mounted with insulated self-framing type enclosure. Generating units are all skid mounted.

2 Narrows Point Plant Aerial Photo with Buildings and Tanks Offered for Sale

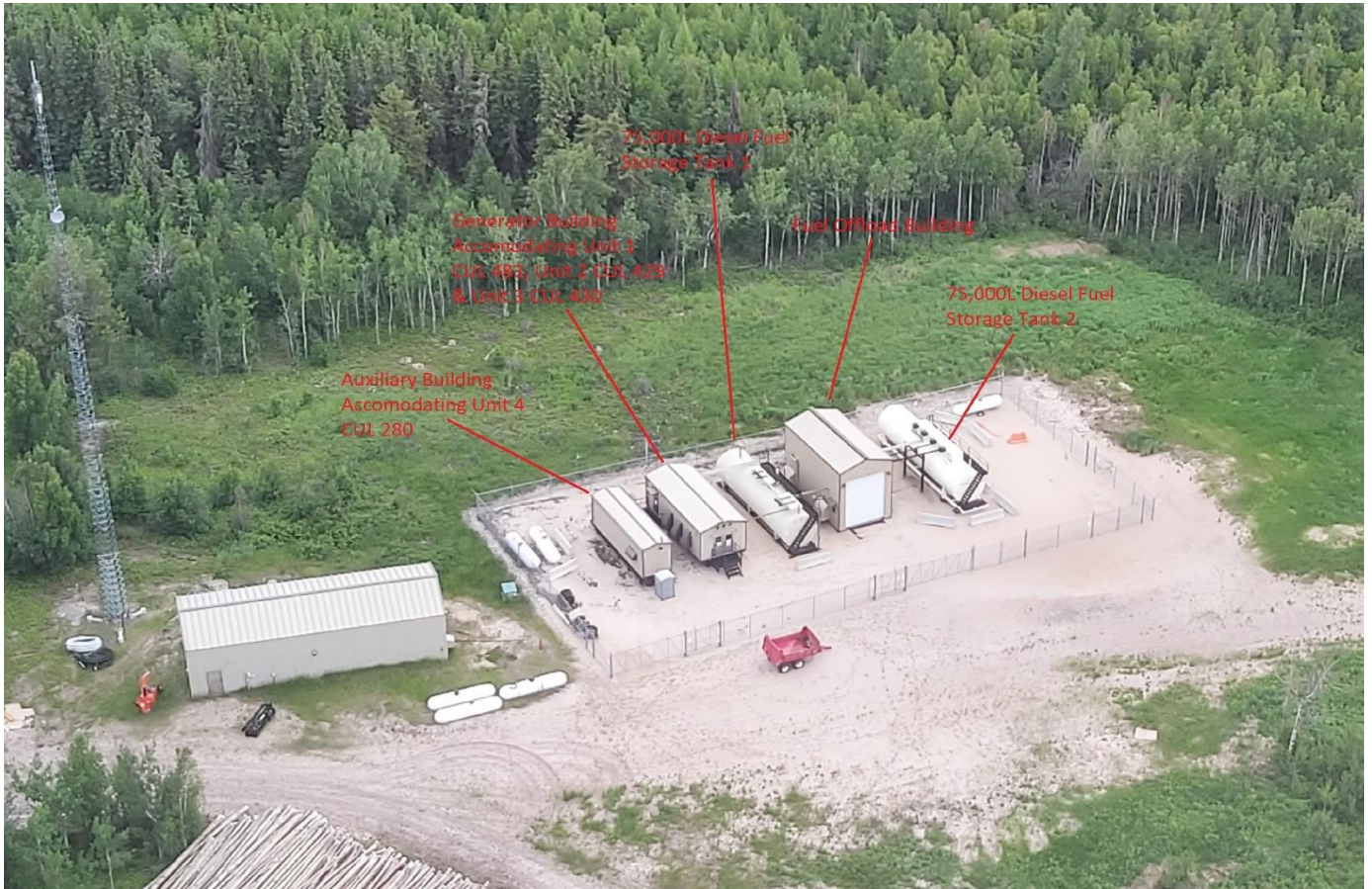


Figure 1 - Aerial Photo of Narrows Point Plant with Buildings and Fuel Tanks Offered for Sale

3 Detailed Asset Information

3.1 Package #1: Generator Building Package

3.1.1 Generator Building

The insulated self-framing prefab generator building is mounted on a skid with 4" containment lip, door ramp, exhaust fan, lighting, and wiring for unit heaters. Year installed: 2004.

The generator building accommodates three generating units along with switchgear, generating unit control panel, day tank, new and oil tank etc. This package includes the building itself and switchgear, day tank, new and oil tank etc. excluding the three generating units and their respective control panel as separate packages.



Picture 1 – Generator Building Accommodating Unit 1, 2 and 3 and Electrical Switchgear



Picture 2 – Generator Building Engine Room (The generating units are excluded from this asset package)



Picture 3 – Electrical Room Switchgear Control Panels in Generator Building

3.1.2 Other Equipment - Balance of the Generator Building

Balance of the Generator Building includes the following:

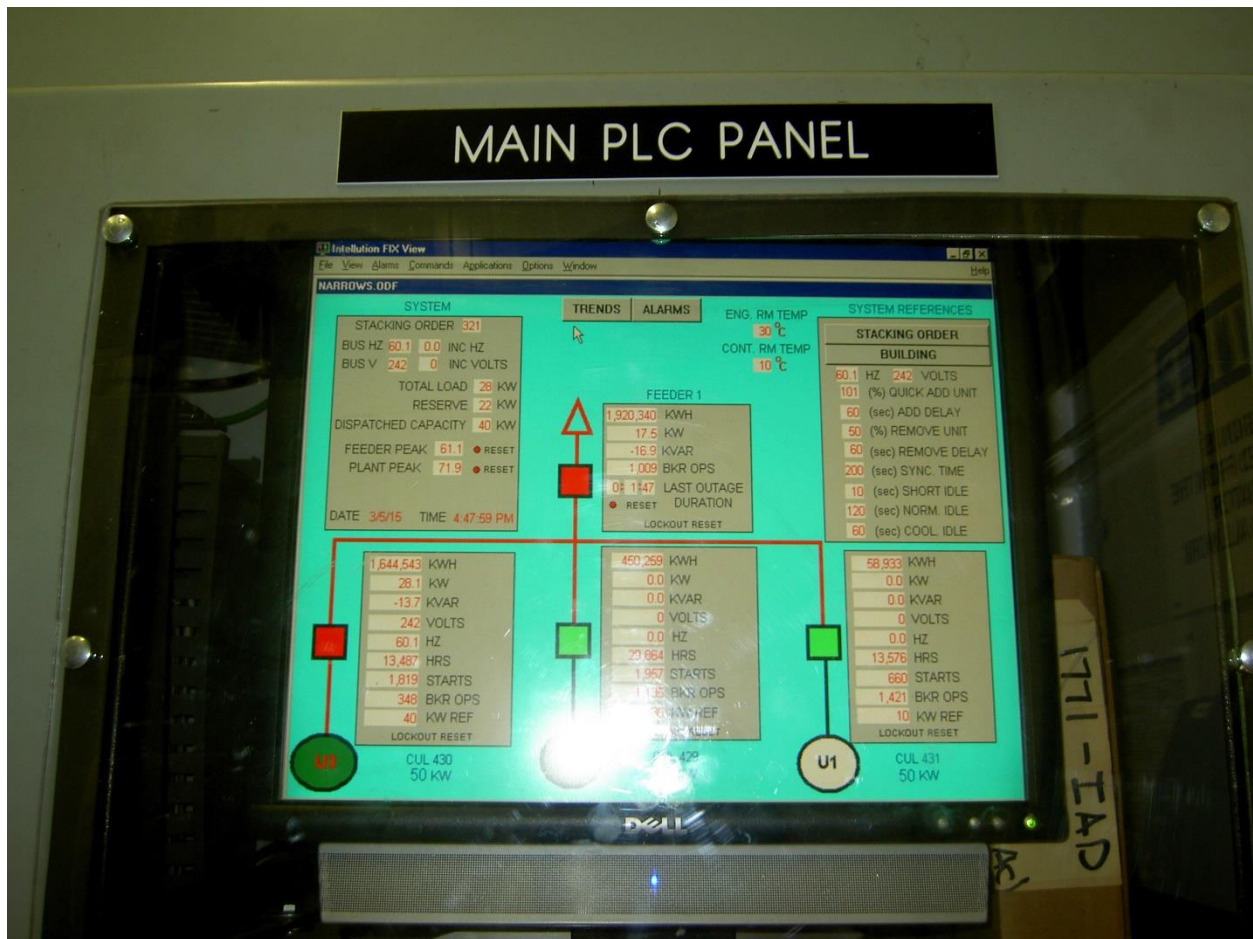
- Switchgear panels, HMI and PLC;
- Day tank, new and oil tank which are all double walled.



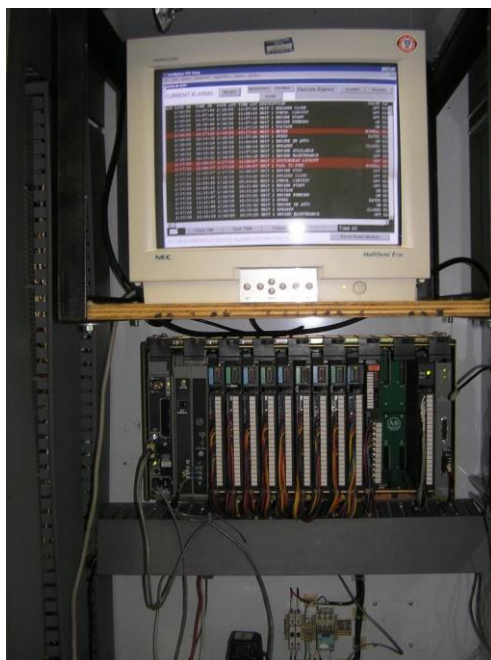
Picture 4 – Feeder 1 Breaker Panel



Picture 5 – Synchronizing Panel



Picture 6 – Plant HMI



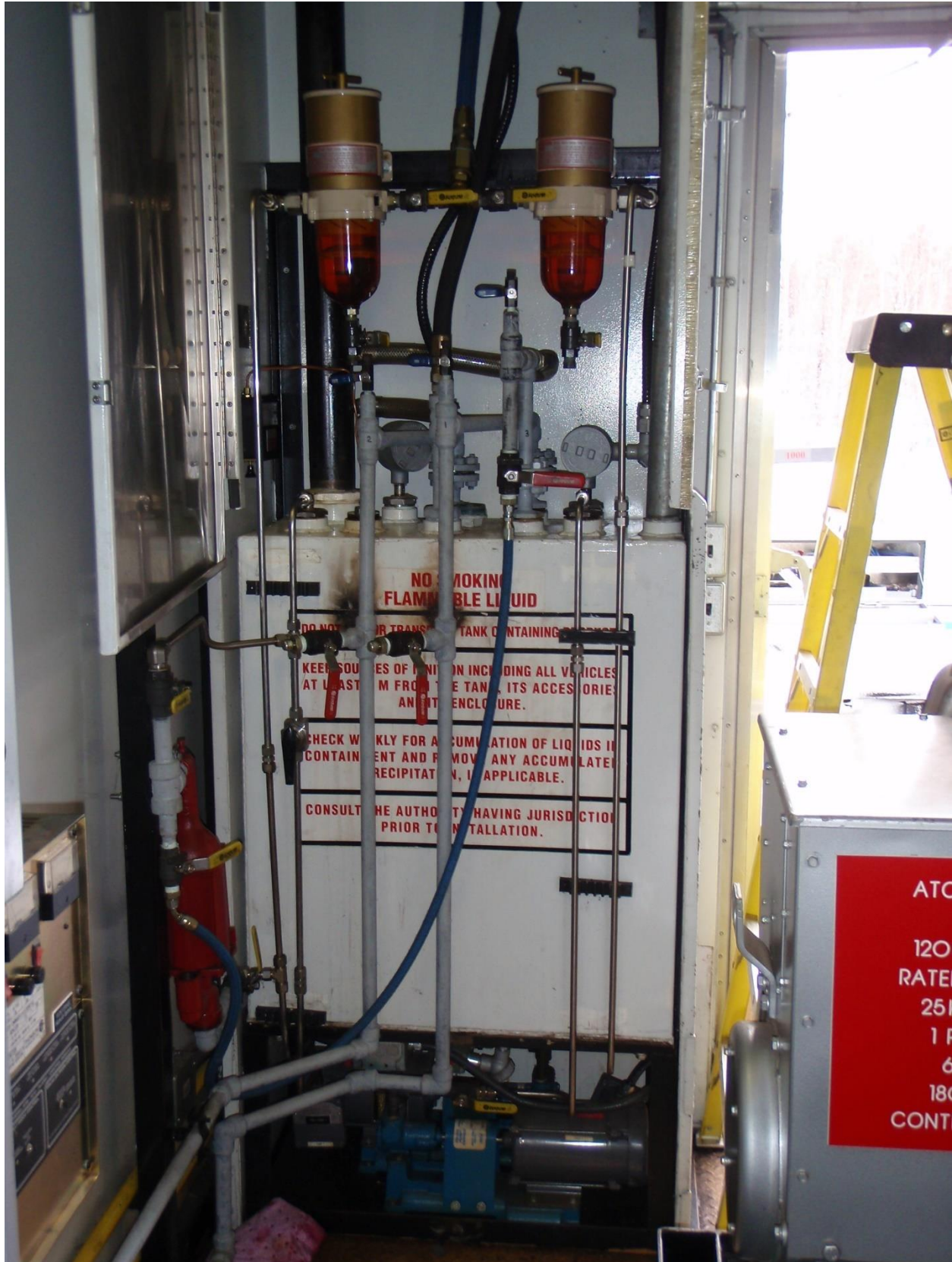
Picture 7 – Plant Main PLC



Picture 8 – Plant Auxiliary PLC Panel



Picture 9 – AC Auxiliary Panel



Picture 10 – Diesel Day Tank of Unit 1, 2 & 3 in Generator Building



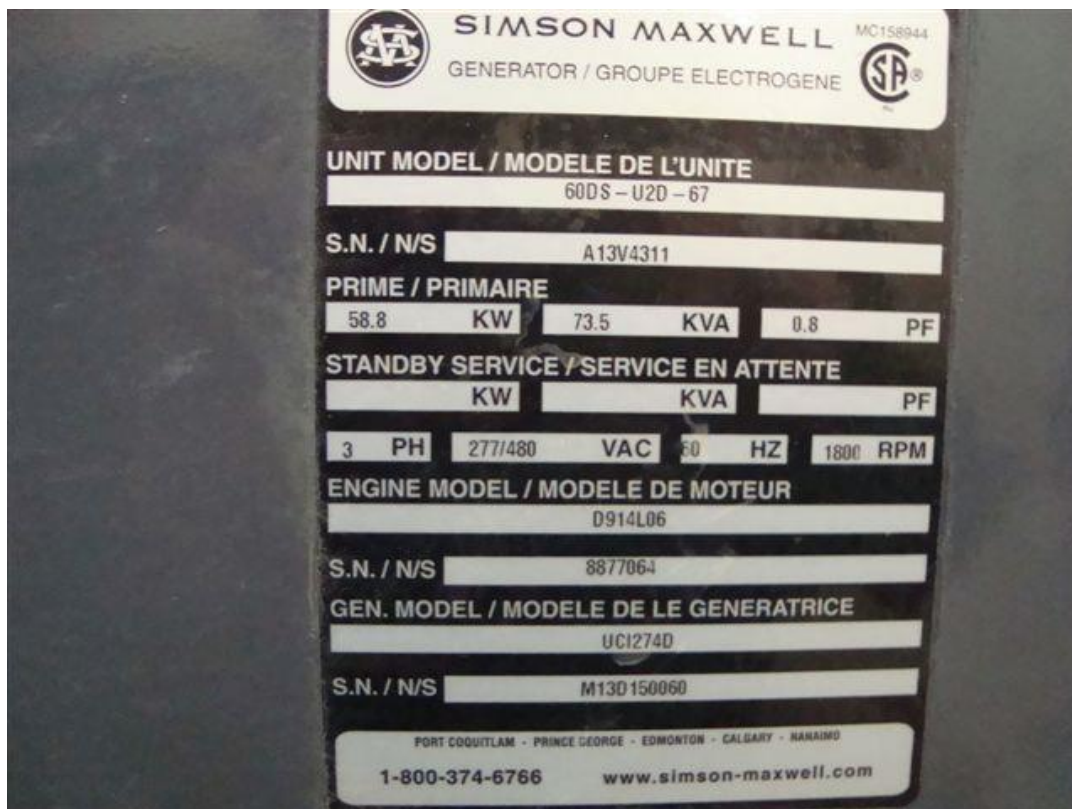
Picture 11 – New and Used Oil Tank in Generator Building

3.2 Package #2: Unit 1 CUL 483 56 kW Diesel Generator Set

Engine maximum continuous rating (kW):	56
Fuel type:	Diesel
Engine manufacturer:	Deutz
Engine model number:	D914L06
Engine serial number:	8865689
Generator manufacturer:	STAMFORD
Generator model number:	UCI274G
Generator serial number:	M13C137918
Voltage rating (Volts):	120/240V
Generator rating (kW):	86
Generator rating (kVA):	108
Total engine operating hours:	39826
Date of Installation:	March, 2014



Picture 12 – Unit 1 CUL 483 Generating Unit



Picture 13 – Unit 1 CUL 483 Generating Unit Nameplate



Picture 14 - Unit 1 CUL 483 Engine Control Panel, Start Battery and Battery Charger

3.3 Package #3: Unit 2 CUL 429 35 kW Diesel Generator Set

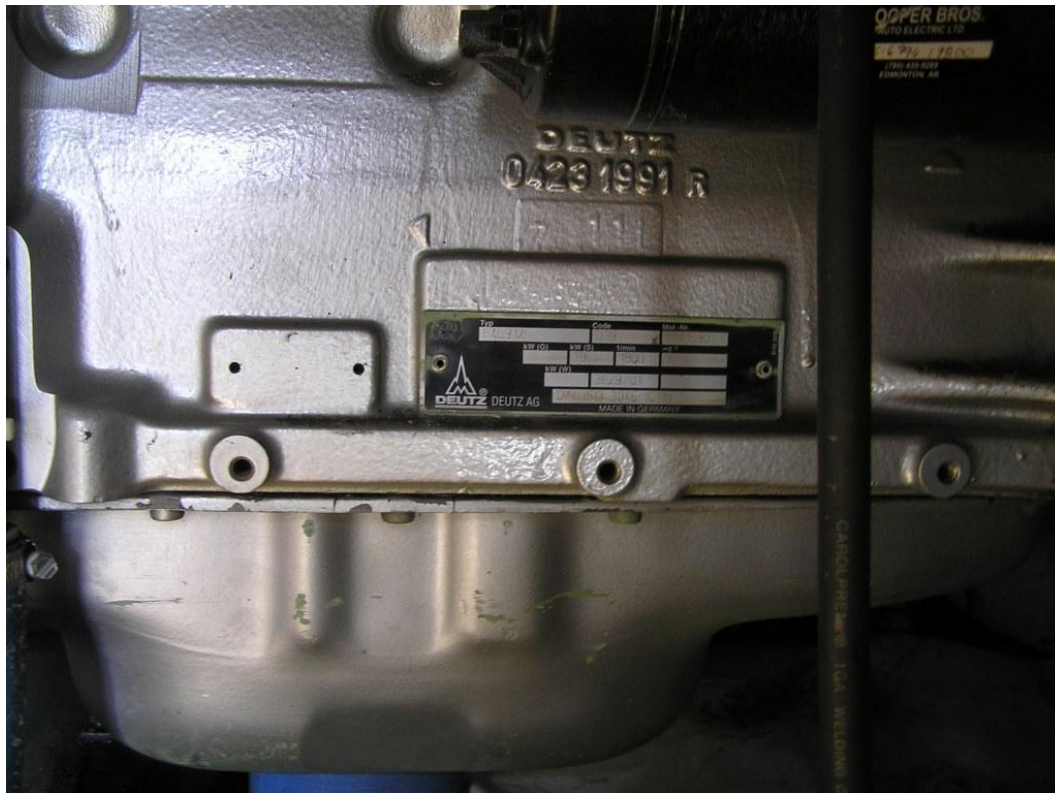
Engine maximum continuous rating (kW):	35
Fuel type:	Diesel
Engine manufacturer:	Deutz
Engine model number:	F4L912
Engine serial number:	8641690
Generator manufacturer:	STAMFORD
Generator model number:	UCI224F
Generator serial number:	H020485-1
Voltage rating (Volts):	120/240V
Generator rating (kW):	35
Generator rating (kVA):	43.75
Total engine operating hours:	42365
Date of Installation:	December, 2003



Picture 15 – Unit 2 CUL 429 Generating Unit



Picture 16 – Unit 2 CUL 429 Generating Unit Nameplate



Picture 17 – Unit 2 CUL 429 Engine Nameplate



Picture 18 – Unit 2 CUL 429 Engine Control Panel, Start Battery and Battery Charger

3.4 Package #4: Unit 3 CUL 430 50 kW Diesel Generator Set

Engine maximum continuous rating (kW):	50
Fuel type:	Diesel
Engine manufacturer:	Deutz
Engine model number:	F6L914
Engine serial number:	8768703
Generator manufacturer:	STAMFORD
Generator model number:	UCI274D
Generator serial number:	M07G212221-02
Voltage rating (Volts):	120/240V
Generator rating (kW):	50
Generator rating (kVA):	62.5
Total engine operating hours:	91094
Date of Installation:	March, 2008



Picture 19 – Unit 3 CUL 430 Generating Unit



Picture 20 – Unit 3 CUL 430 Engine Control Panel, Start Battery and Battery Charger

3.5 Package #5: Auxiliary Building Package

3.5.1 Auxiliary Building

The self-framing prefab auxiliary building is skid mounted and sits on piles.

The auxiliary building accommodates generating unit 4 along with its main breaker, generating unit control panel, day tank, oil tank, spare parts and shelves. This package includes the building itself, the day tank, oil tank, spare parts and shelves excluding the generating unit 4, its control panel and breaker as a separate package.



Picture 21 – Auxiliary Building Accommodating Unit 4



Picture 22 – Auxiliary Building – Inside (The generating unit, its control panel and breaker is excluded from this asset package as a separate package)

3.5.2 Other Equipment – Balance of the Auxiliary Building

Balance of the auxiliary building includes the following:

- Diesel day tank
- Spare parts and shelf.



Picture 23 – Unit 4 Diesel Day Tank in Auxiliary Building

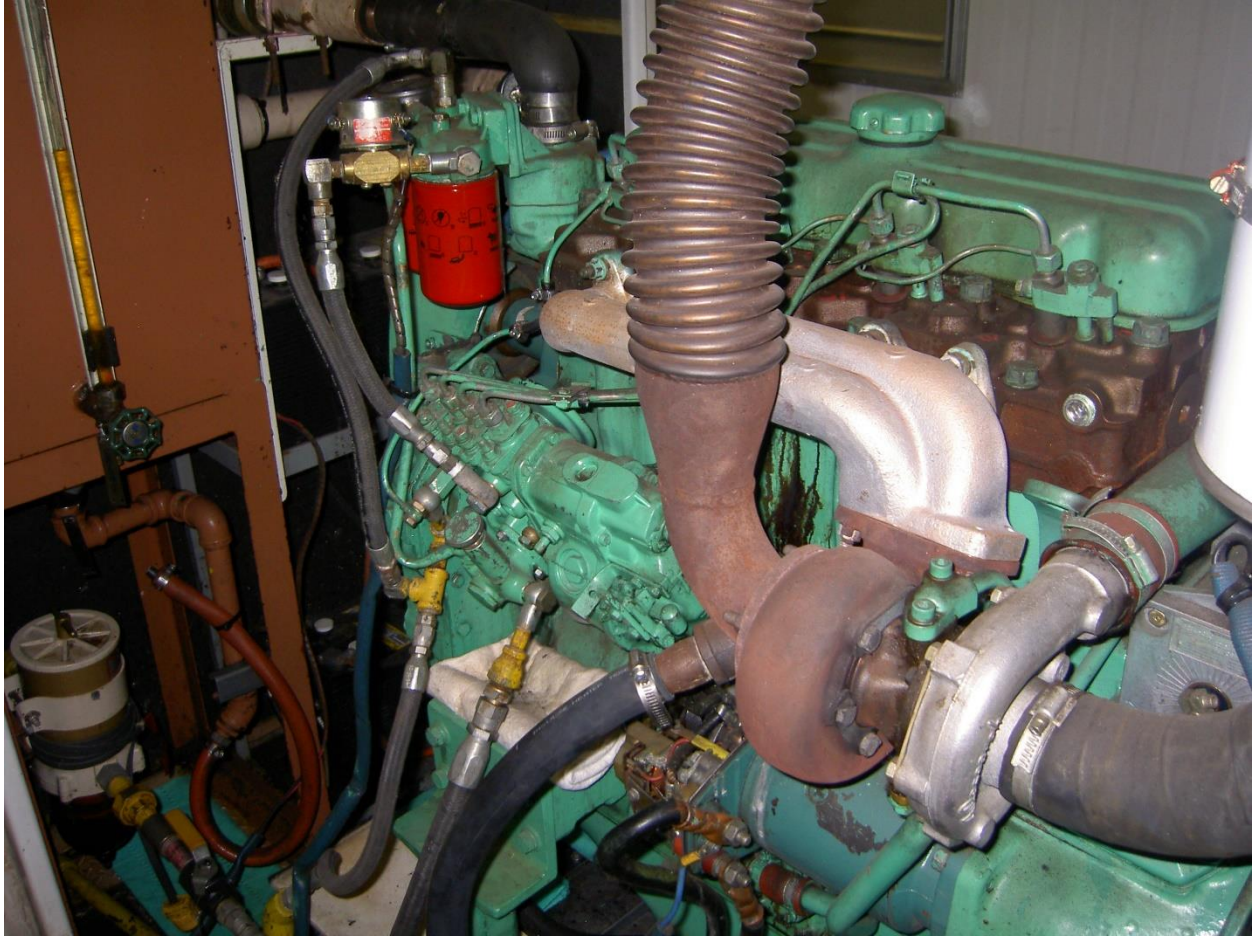


Picture 24 – Unit 4 Oil Tank in Auxiliary Building

Page 27 of 37

3.6 Package #6: Unit 4 CUL 280 60 kW Diesel Generator Set

Engine maximum continuous rating (kW):	60
Fuel type:	Diesel
Engine manufacturer:	Volvo
Engine model number:	TD45B
Engine serial number:	16313/68439
Generator manufacturer:	MARKON
Generator model number:	B224D
Generator serial number:	869210/1
Voltage rating (Volts):	480V
Generator rating (kW):	60
Generator rating (kVA):	75
Total engine operating hours:	30662
Date of Installation:	February, 2004



Picture 27 – Unit 4 CUL 280 Generating Unit



Picture 28 – Unit 4 CUL 280 Unit Breaker Panel



Picture 29 – Unit 4 CUL 280 Engine Control Panel



Picture 30 – Unit 4 CUL 280 Engine Start Battery



Picture 31 – Unit 4 CUL 280 Engine Battery Charger

3.7 Package #7: Diesel Fuel Storage Tank 1 (75,000 Litres) (Year manufactured: 2003)

The secondary-contained diesel fuel storage tank is mounted on a steel skid equipped with spill box and walkway.



Picture 32 – 75,000 Litres Diesel Fuel Storage Tank 1



Picture 33 – 75,000 Litres Diesel Fuel Storage Tank 1 Nameplate



Picture 34 – 75,000 Litres Diesel Fuel Storage Tank 1 Spill Box and Walkway

3.8 Package #8: Diesel Fuel Storage Tank 2 (75,000 Litres) (Year manufactured: 2013)

The secondary-contained diesel fuel storage tank is mounted on a steel skid equipped with spill box and walkway.



Picture 35 – 75,000 Litres Diesel Fuel Storage Tank 2



Picture 36 – 75,000 Litres Diesel Fuel Storage Tank 2 Nameplate



Picture 37 – 75,000 Litres Diesel Fuel Storage Tank 2 Spill Box and Walkway



Picture 38 – 75,000 Litres Diesel Fuel Storage Tank 2 Pump Control Panel

3.9 Package #9: Fuel Offload Building Package

The self-framing prefab fuel offload building sits on piles with a steel containment underneath. Year installed: 2004.



Picture 39 – Fuel Offload Building



Picture 40 – Fuel Offload Building – Inside