

June 2, 2021

RE: Buffalo Creek Transmission Project – Substation Update

*A Component of the Provost to Edgerton and Nilrem to Vermilion Transmission System
Reinforcement Project*

In December 2020, ATCO Electric Ltd. (ATCO) sent you information about potential substation locations along Route Option A of the Buffalo Creek Transmission Project (the Project). As a stakeholder in proximity of these potential substation locations, we want to provide you with an update.

Drury Substation Location Along Route Option A

ATCO assessed three potential substation locations along Route Option A. As a result of the assessment and consultation with landowners, ATCO has selected the substation location (SE 8-50-9 W4M) shown on the enclosed 2007S Drury Substation Site Mosaic Map. This proposed substation site will be in addition to the substation site proposed along Route Option C (NE 2-50-9 W4M) that was previously submitted to the Alberta Utilities Commission (AUC).

On January 29, 2021, ATCO submitted an Amendment to its Facility Application to the AUC in AUC Proceeding No. 26145, proposing the identified 2007S Drury substation adjacent to Route Option A (SE 8-50-9 W4M). As previously communicated to you, only one substation will be built for the Project, which is dependent on the AUC's approval of either Route Option A or Route Option C.

Drury Substation

The Drury substation will contain a variety of electrical equipment, including four 144 kilovolt circuit breakers, a 19 metre (m) tall telecommunication tower, and a control building. The fenced area of the substation will be approximately 107 m by 51 m.

However, additional area outside the substation fence line is required, and the overall substation site is currently planned to be approximately 500 m by 500 m.

Transmission Line Route to the Substation

The substation locations are directly adjacent to the applied-for route and ATCO has also proposed small modifications to the transmission lines routes that will be required for the transmission lines to enter and exit the Drury substation.

Next Steps

If approval is granted by the AUC, construction activities may commence as early as October 2021, where possible. Please note that project timing and details may be adjusted as plans are finalized.

Thank you for your participation in the project, we appreciate you taking the time to provide us with your feedback. Please contact us at your earliest convenience should you have any questions or comments.

Sincerely,



Dan Burton

Project Planner

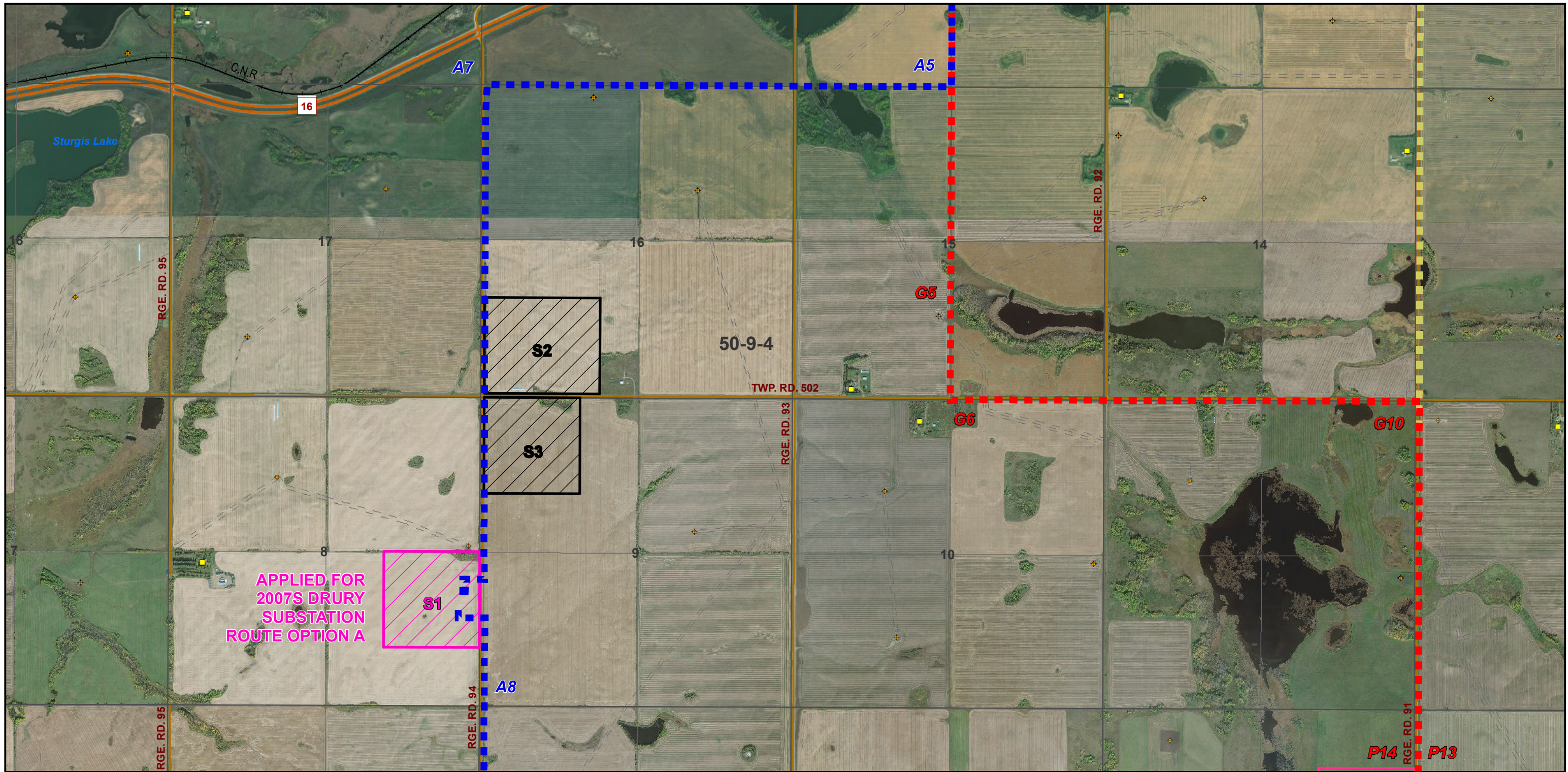
Toll Free: 1-855-420-5775

E-mail: consultation@atcoelectric.com

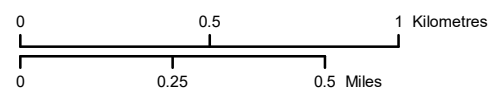
Enclosures:

2007S Drury Substation Site Mosaic Map (RS-7L333-N8-01)

Reply Form and Postage-Paid Envelope

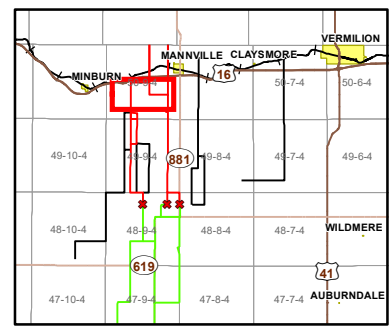


- Applied For Substation Site Boundary
- Rejected Substation Site Boundary
- Applied For Substation Site Boundary Node
- Rejected Substation Site Boundary Node
- ATCO Transmission Line Proposed Route Option A
- ATCO Transmission Line Proposed Route Option C
- ATCO Transmission Line Proposed Route Variation C2
- A1 Applied For Route Option A Node
- A1 Applied For Route Option C Node
- Residence
- Surface Well Site
- Railway
- Primary Highway
- Road
- Existing Easement R/W



NOTES:
 - Only facilities in the vicinity of the project are shown.
 - Several routes are shown, but only one will be built.

This map is the property of ATCO. This map is not intended to be used in place of Alberta One Call.
 Always practice extreme caution when near power lines!



KEY MAP



Buffalo Creek Transmission Project

2007S DRURY SUBSTATION
 SITE MOSAIC MAP

June 2021

RS-7L333 - N8 - 01

CREDIT NOTES
 Alberta Data Partnerships, Government of Alberta, Government of Canada, IHS Markit, AltaLink, ATCO, Imagery: DigitalGlobe 2019



SHAPE THE CONVERSATION

BUFFALO CREEK TRANSMISSION PROJECT

REPLY FORM

10035-105 Street, Edmonton, Alberta, T5J 1C8

CONTACT INFORMATION

Date (DD/MM/YYYY): _____

First Name: _____

Last Name: _____

Company/Organization Name (if applicable):

Mailing Address: _____

Home Phone: _____

Cell Phone: _____

Business Phone: _____

Email: _____

Please help us identify new contacts

You were contacted about this project because ATCO identified you or your company/organization as having a land interest in the vicinity of the project. Is there anyone else associated with your property, such as other owners, renters or occupants, who we should also contact? If so, please provide the name(s), contact information and their land interest.

I would like to receive all future correspondence about this project by Email (If this is your preference, please check the box)

AN IMPORTANT MESSAGE ABOUT PRIVACY: *The information on this form is being collected to identify concerns with proposed changes to and/or the siting of power transmission facilities, and to comply with the Alberta Utilities Commission (AUC) rules regarding the submission of transmission facilities applications. This information may be provided to electric facility owners, Alberta's Surface Rights Board, and the Alberta Electric System Operator. Your comments and personal information may also be publicly accessible through the AUC website, should it be submitted to the AUC as part of a transmission facility application – subject to Alberta's Freedom of Information and Protection of Privacy Act. **If you wish to keep your information confidential, you must make a request to the AUC (403-592-4376).** If you have questions or concerns about your information or how it may be used or disclosed as part of this process, please contact us (see contact information below).*

Please let us know by checking a box below if either statement applies to you:

I do not have concerns with the Project based on the information provided

I have concerns with the Project based on the information provided

Please share any comments or concerns that you have about the Project:

HOW TO SUBMIT: Please use the enclosed envelope to return by mail or fax to 780-420-5030. If you would like more information about the project, please contact us toll free 1-855-420-5775 or by Email: consultation@atcoelectric.com.