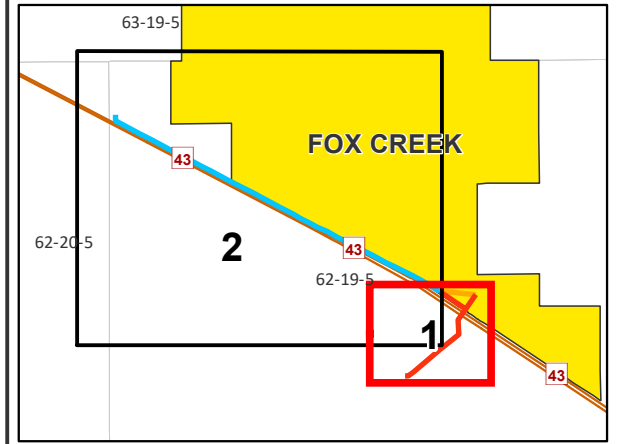
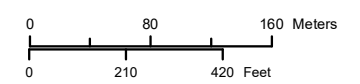


- A1 B1** Approved Route Node
- Approved 144 kV Transmission Line Route
- Approved 144 kV Transmission Line Route Alteration
- Existing 144 kV Line To Be Altered
- Existing 144 kV Line To Be Removed
- Customer's Substation Fence Boundary
- Existing 144 kV Transmission Line
- Existing Distribution Line
- Primary Highway
- Road
- Town
- Existing Easement Right of Way
- Parcel Boundary
- Current Disposition

**CREDIT NOTES**  
 Alberta Data Partnerships, Government of Alberta, IHS Markit, Valtus Imagery Service 2014



**INDEX MAP**



**NOTES:**  
 - Only facilities in the vicinity of the project are shown.

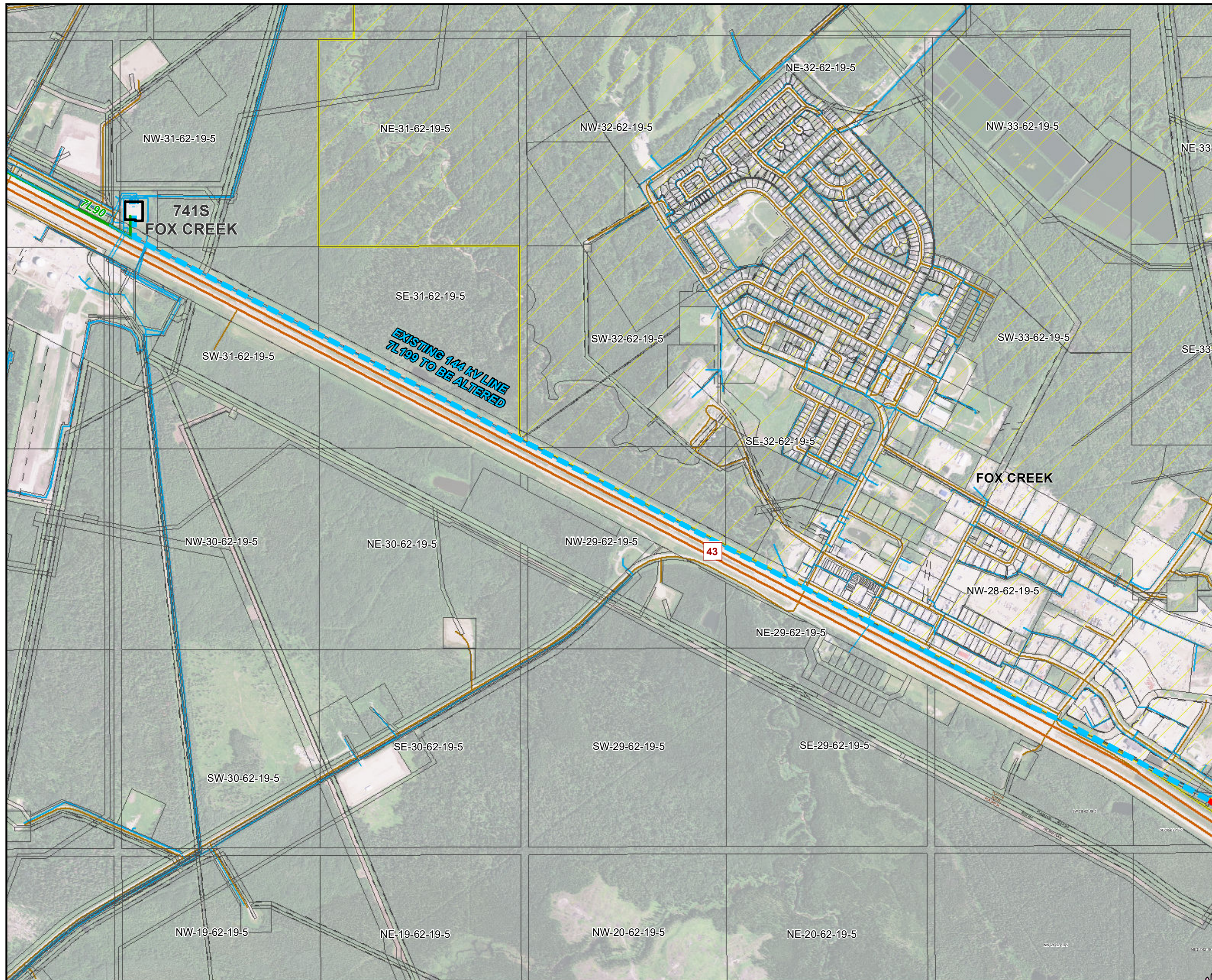
This map is the property of ATCO. This map is not intended to be used in place of Alberta One Call. Always practice extreme caution when near power lines!



Kiwetinohk Opal Transmission Project

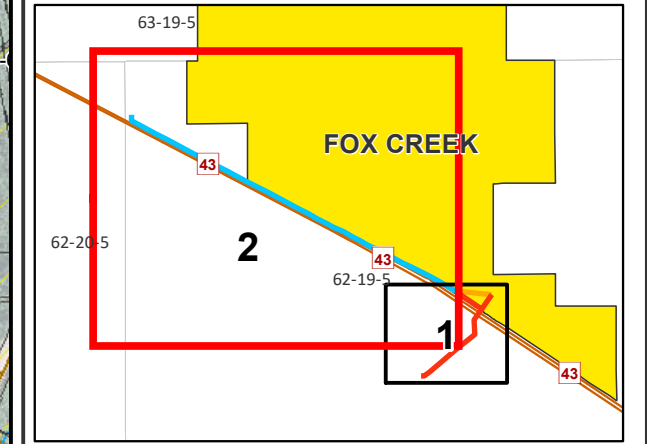
APPROVED ROUTE MOSAIC  
 MAP 1 of 2

May 2024  
 RS-7LA199 - N2 - 01

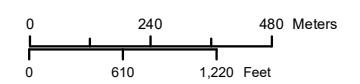


- A1 B1** Approved Route Node
- Approved 144 kV Transmission Line Route Alteration
- Existing 144 kV Line To Be Altered
- Existing 144 kV Line To Be Removed
- Existing 144 kV Transmission Line
- Existing Distribution Line
- Existing Substation Footprint
- Primary Highway
- Road
- Town
- Existing Easement Right of Way
- Parcel Boundary
- Current Disposition

**CREDIT NOTES**  
 Alberta Data Partnerships, Government of Alberta, IHS Markit, Valtus Imagery Service 2014



**INDEX MAP**



**NOTES:**  
 - Only facilities in the vicinity of the project are shown.

This map is the property of ATCO. This map is not intended to be used in place of Alberta One Call. Always practice extreme caution when near power lines!



Kiwetinohk Opal Transmission Project

APPROVED ROUTE MOSAIC  
 MAP 2 of 2

May 2024

RS-7LA199 - N2 - 01