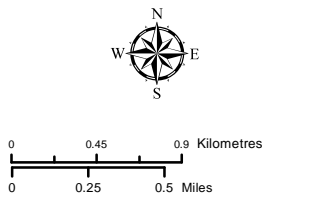
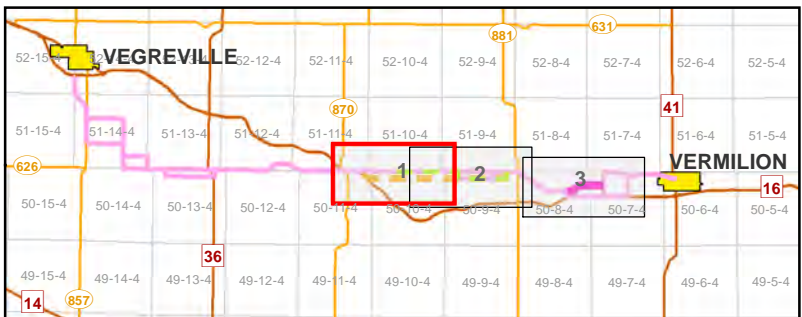


- Planned 144 kV Reroute Option 1
- Planned 144 kV Reroute Option 2
- Planned 144 kV Reroute Option 3
- Previously Proposed 144 kV Routes
- Rejected Route
- **A1** Reroute Route Node
- **A1** Proposed Route Node
- **A1** Rejected Route Node
- Existing/ Approved Substation
- Existing/ Approved 144 kV Transmission Line
- Primary Highway
- Secondary Highway
- Road
- Railway
- Residence
- Surface Well Site
- Town/ Village
- Provincial Park
- Waterbody
- Watercourse
- Existing Easement R/W
- Current Disposition



NOTES:  
 - Only facilities in the vicinity of the project are shown.  
 - Several routes are shown, but only one will be built.

This map is the property of ATCO. This map is not intended to be used in place of Alberta One Call.  
 Always practice extreme caution when near power lines!

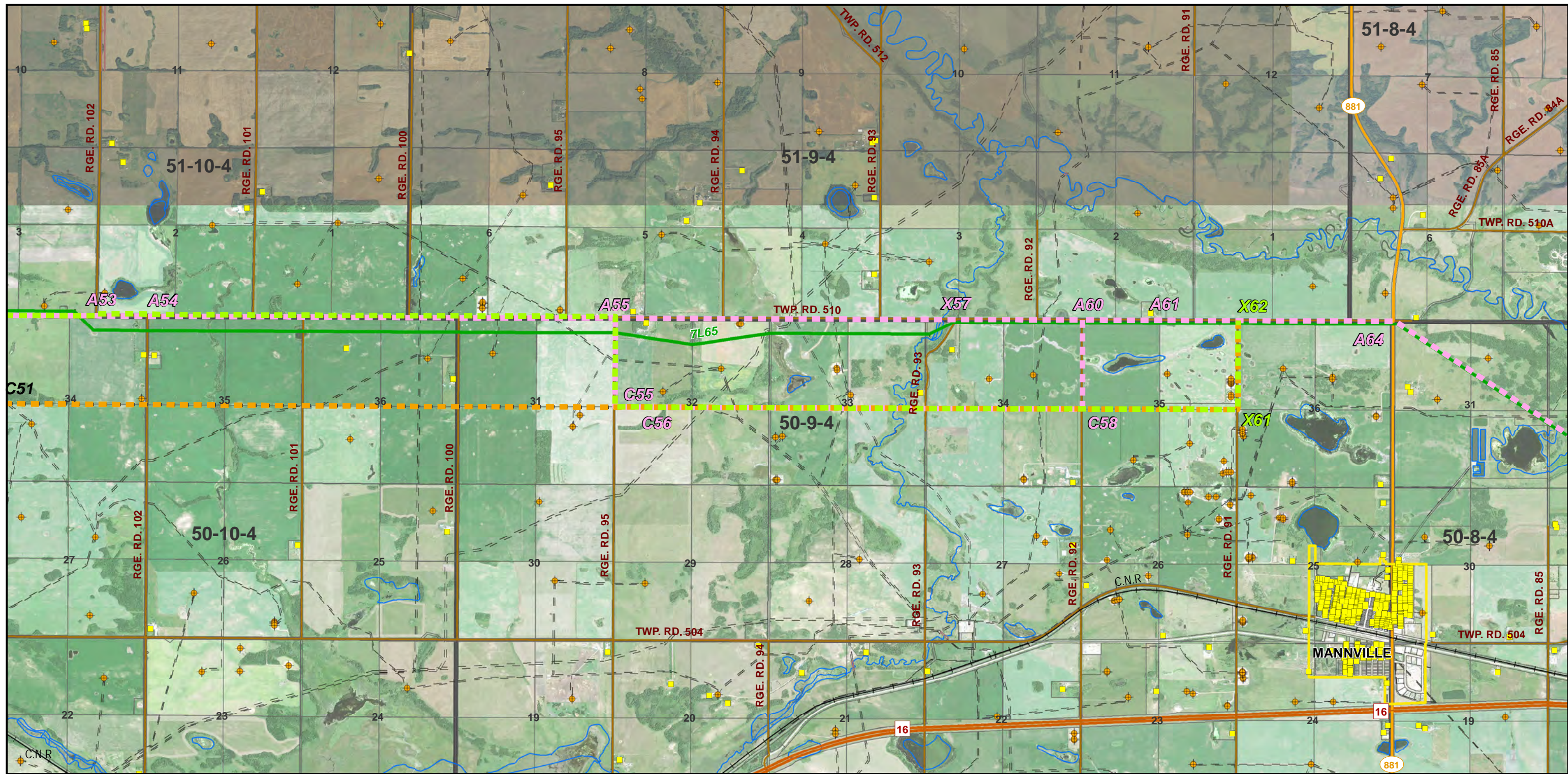


INDEX MAP

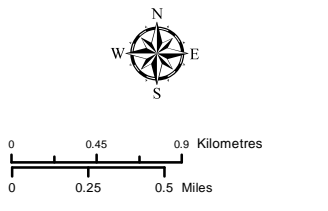


7L65 Line Rebuild Project  
 PLANNED RE-ROUTES MOSAIC  
 MAP 1 of 3

August 2019  
 RS-7L65 - N4 - 02a

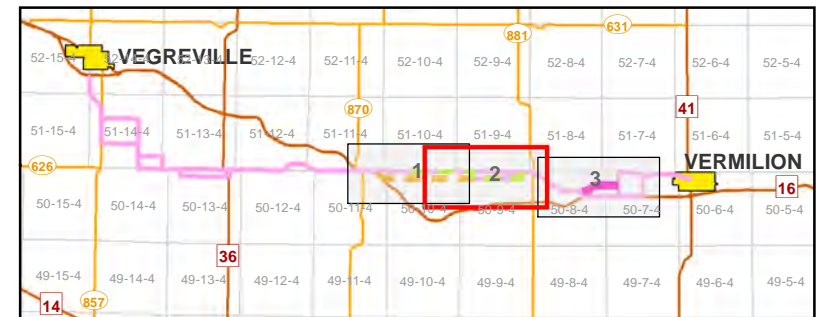


- |                                   |   |                       |
|-----------------------------------|---|-----------------------|
| Planned 144 kV Reroute Option 1   | Existing/ Approved 144 kV Transmission Line | Waterbody             |
| Planned 144 kV Reroute Option 2   | Primary Highway                             | Watercourse           |
| Planned 144 kV Reroute Option 3   | Secondary Highway                           | Existing Easement R/W |
| Previously Proposed 144 kV Routes | Road  | Current Disposition   |
| Rejected Route                    | Railway                                     |                       |
| <b>A1</b> Reroute Route Node      | Residence                                   |                       |
| <b>A1</b> Proposed Route Node     | Surface Well Site                           |                       |
| <b>A1</b> Rejected Route Node     | Town/ Village                               |                       |
| Existing/ Approved Substation     | Provincial Park                             |                       |



NOTES:  
 - Only facilities in the vicinity of the project are shown.  
 - Several routes are shown, but only one will be built.

This map is the property of ATCO. This map is not intended to be used in place of Alberta One Call.  
 Always practice extreme caution when near power lines!

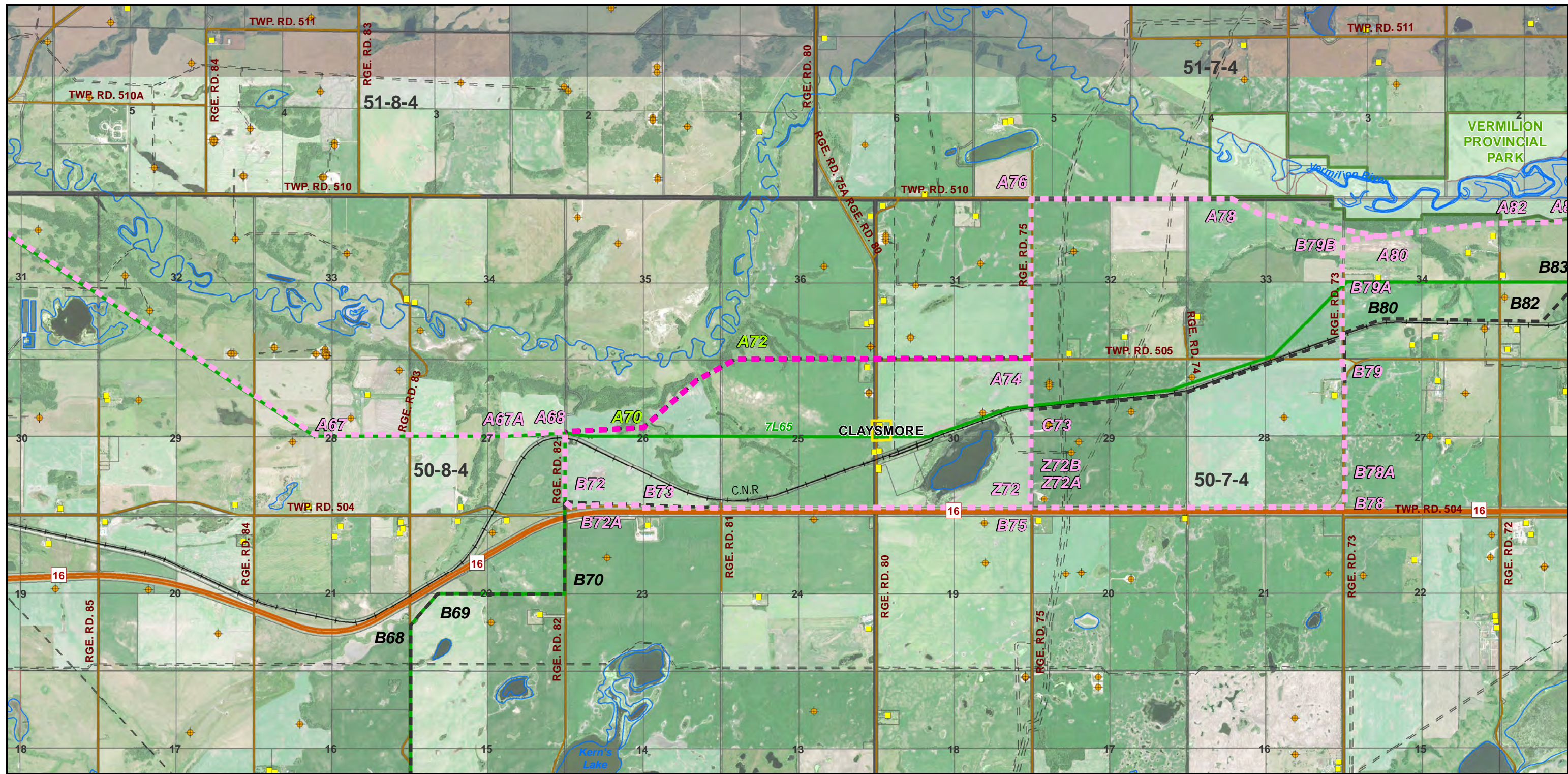


INDEX MAP

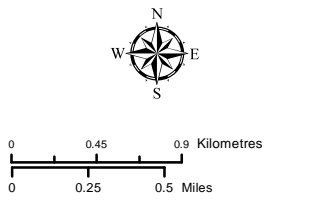


**7L65 Line Rebuild Project**  
**PLANNED RE-ROUTES MOSAIC**  
 MAP 2 of 3

August 2019  
 RS-7L65 - N4 - 02b

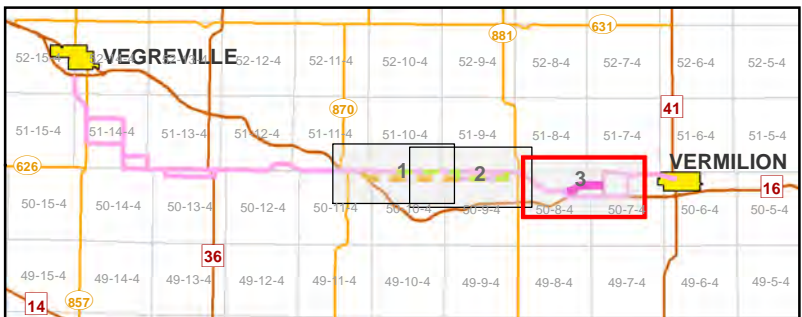


- Planned 144 kV Reroute Option 1
- Planned 144 kV Reroute Option 2
- Planned 144 kV Reroute Option 3
- Previously Proposed 144 kV Routes
- Rejected Route
- Existing/ Approved 144 kV Transmission Line
- Primary Highway
- Secondary Highway
- Road
- Railway
- Waterbody
- Watercourse
- Existing Easement R/W
- Current Disposition
- A1 Reroute Route Node
- A1 Proposed Route Node
- A1 Rejected Route Node
- Existing/ Approved Substation
- Residence
- ◆ Surface Well Site
- Town/ Village
- Provincial Park



NOTES:  
 - Only facilities in the vicinity of the project are shown.  
 - Several routes are shown, but only one will be built.

This map is the property of ATCO. This map is not intended to be used in place of Alberta One Call.  
 Always practice extreme caution when near power lines!



INDEX MAP



7L65 Line Rebuild Project  
 PLANNED RE-ROUTES MOSAIC  
 MAP 3 of 3

August 2019  
 RS-7L65 - N4 - 02c