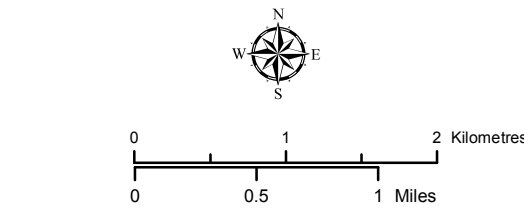
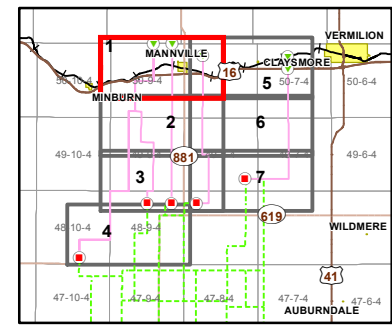


- | | |
|---|---|
| Transmission Line Route Concepts | Secondary Highway |
| AltaLink Transmission Line Route Concepts | Road |
| A1 Route Concept Node | Town/ Village |
| Route Concept Start Point | Existing Easement R/W |
| Existing/ Approved 144 kV Transmission Line | Current Disposition |
| Previously Proposed 144 kV Route Rebuild | Waterbody |
| Residence | Watercourse |
| Surface Well Site | ATCO/ AltaLink Service Territory Boundary |
| Railway | |
| Primary Highway | |



NOTES:
 - Only facilities in the vicinity of the project are shown.
 - Several routes are shown, but only one will be built.



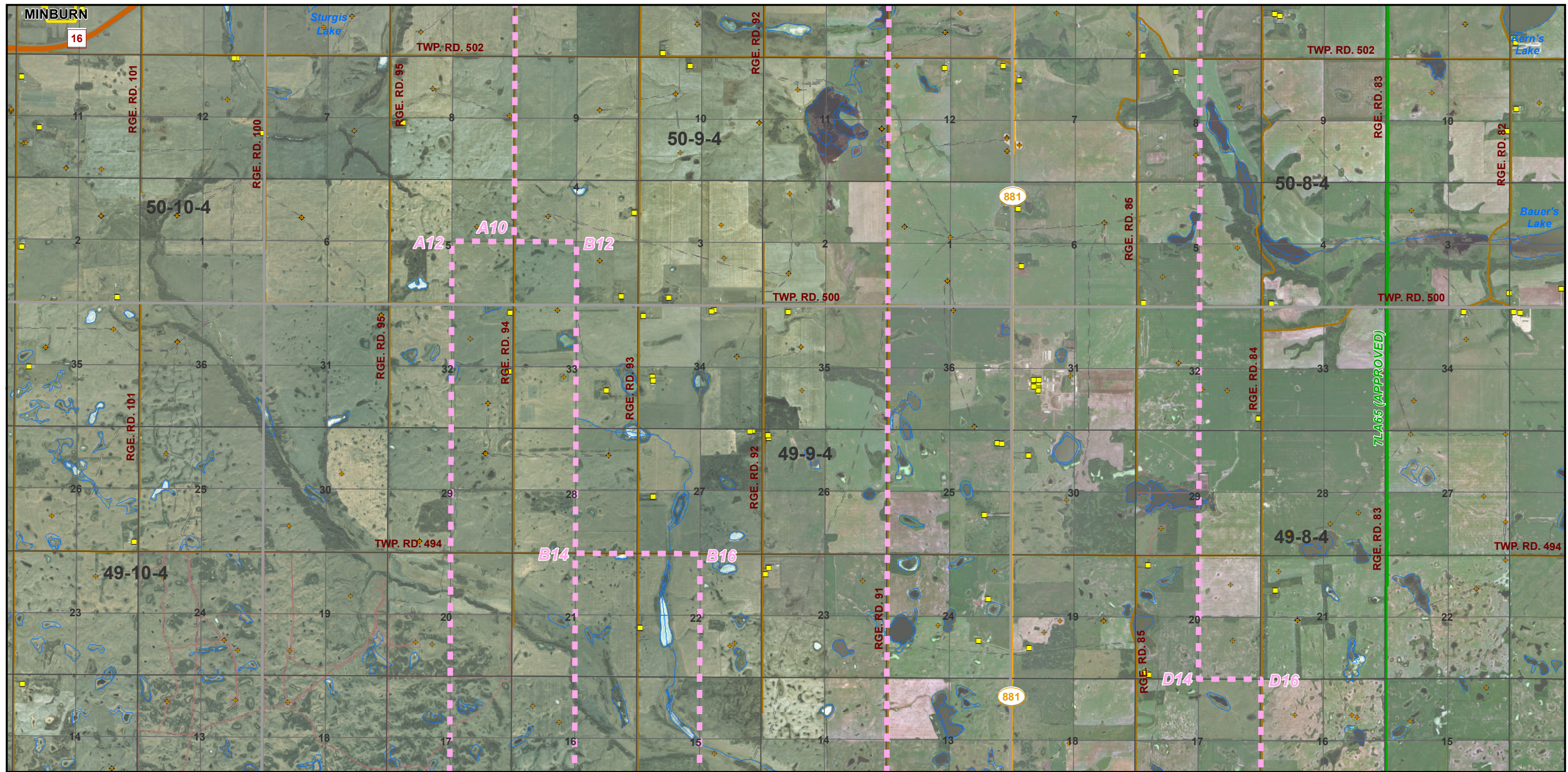
CREDIT NOTES
 Alberta Data Partnerships, IHS Markit, Imagery: DigitalGlobe 2012-2016

This map is the property of ATCO. This map is not intended to be used in place of Alberta One Call.
 Always practice extreme caution when near power lines!

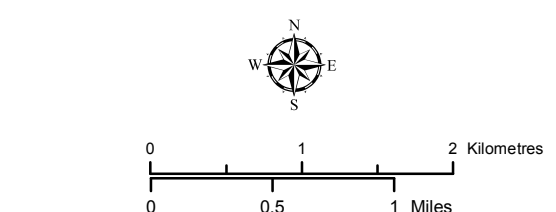


Buffalo Creek Transmission Project
 ROUTE CONCEPTS MOSAIC
 MAP 1 of 7

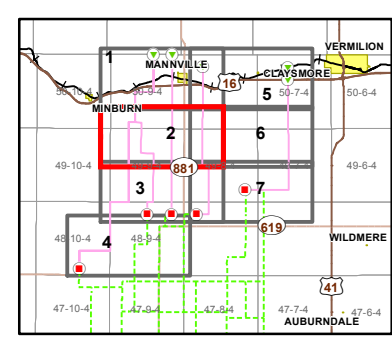
September 2019
 RS-7L333 - N1 - 02a



- Transmission Line Route Concepts
- AltaLink Transmission Line Route Concepts
- A1** Route Concept Node
- Existing/ Approved 144 kV Transmission Line
- Residence
- ◆ Surface Well Site
- Primary Highway
- Secondary Highway
- Road
- Town/ Village
- Existing Easement R/W
- Current Disposition
- Waterbody
- Watercourse
- ATCO/ AltaLink Service Territory Boundary



NOTES:
 - Only facilities in the vicinity of the project are shown.
 - Several routes are shown, but only one will be built.



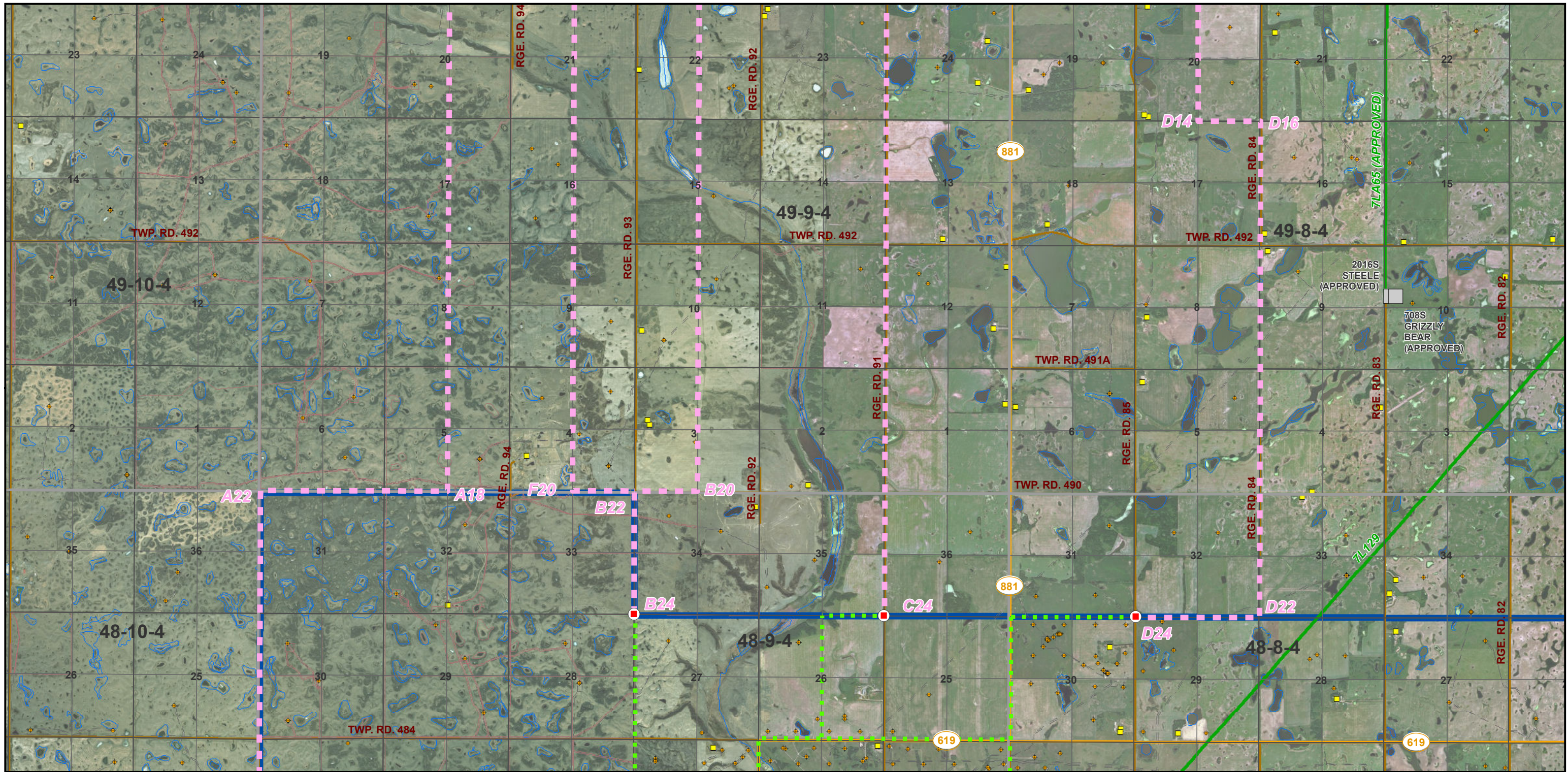
CREDIT NOTES
 Alberta Data Partnerships, IHS Markit, Imagery: DigitalGlobe 2012-2016

This map is the property of ATCO. This map is not intended to be used in place of Alberta One Call.
 Always practice extreme caution when near power lines!



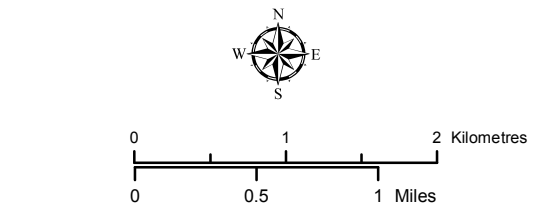
Buffalo Creek Transmission Project
ROUTE CONCEPTS MOSAIC
MAP 2 of 7

September 2019
 RS-7L333 - N1 - 02b

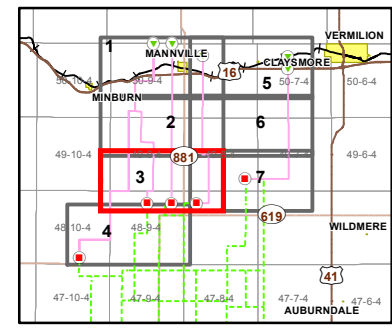


- Transmission Line Route Concepts
- AltaLink Transmission Line Route Concepts
- A1** Route Concept Node
- Route Concept End Point /AltaLink Connection Point
- Existing/ Approved Substation
- Existing/ Approved 144 kV Transmission Line
- Residence
- + Surface Well Site
- Secondary Highway
- Road
- Existing Easement R/W
- Current Disposition
- Waterbody
- Watercourse
- ATCO/ AltaLink Service Territory Boundary

CREDIT NOTES
 Alberta Data Partnerships, IHS Markit, Imagery: DigitalGlobe 2012-2016



NOTES:
 - Only facilities in the vicinity of the project are shown.
 - Several routes are shown, but only one will be built.

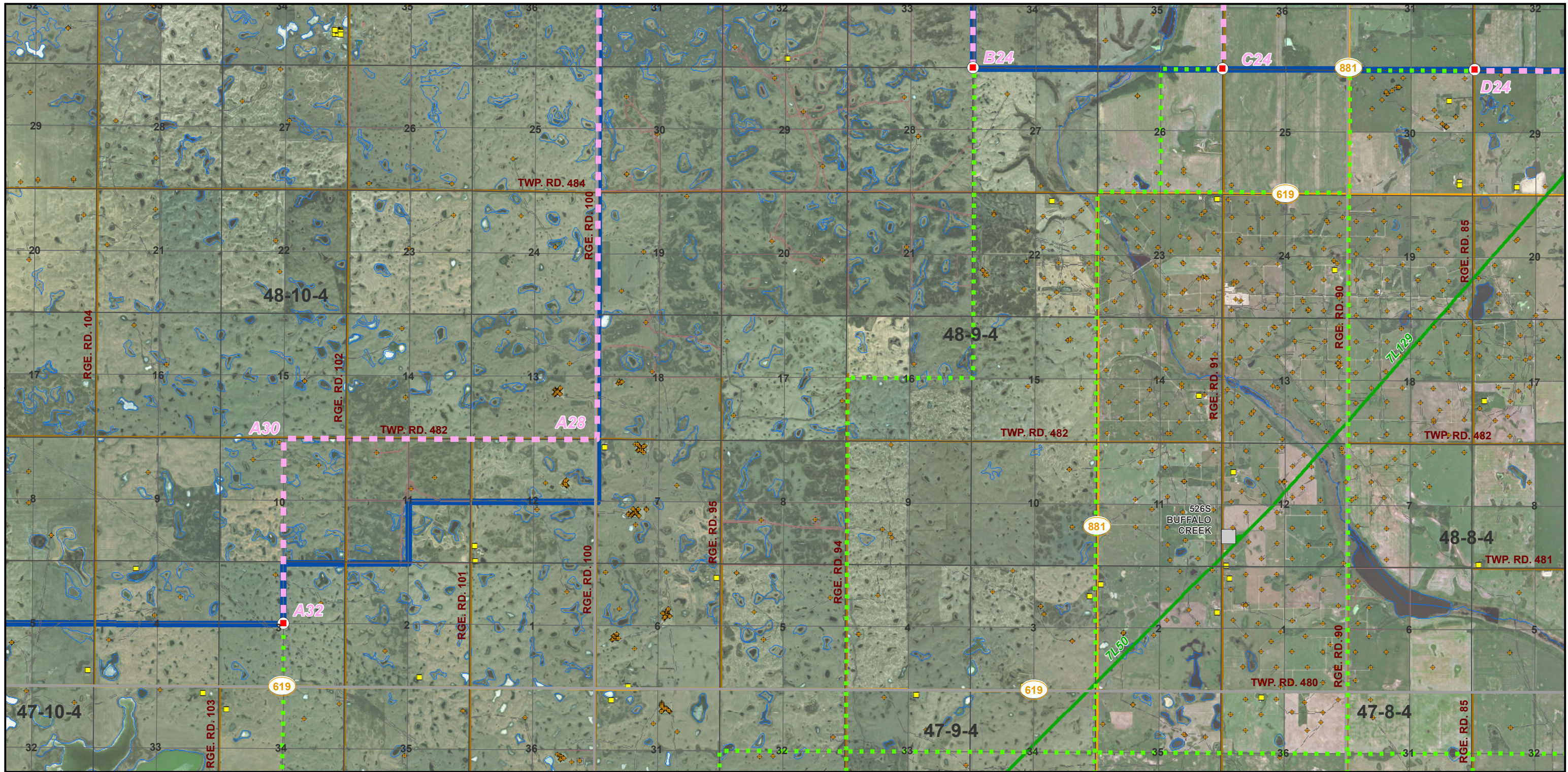


INDEX MAP



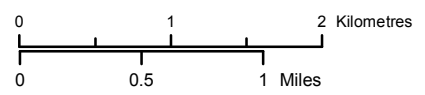
Buffalo Creek Transmission Project
ROUTE CONCEPTS MOSAIC
MAP 3 of 7

September 2019
 RS-7L333 - N1 - 02c

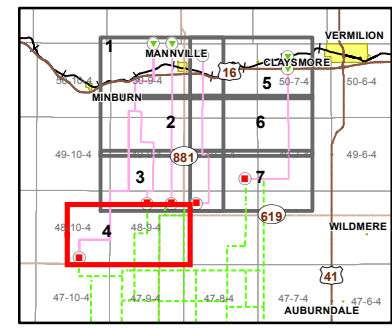


- Transmission Line Route Concepts
- AltaLink Transmission Line Route Concepts
- A1** Route Concept Node
- Route Concept End Point /AltaLink Connection Point
- Existing/ Approved Substation
- Existing/ Approved 144 kV Transmission Line
- Residence
- + Surface Well Site
- Secondary Highway
- Road
- Existing Easement R/W
- Current Disposition
- Waterbody
- Watercourse
- ATCO/ AltaLink Service Territory Boundary

CREDIT NOTES
 Alberta Data Partnerships, IHS Markit, Imagery: DigitalGlobe 2012-2016



NOTES:
 - Only facilities in the vicinity of the project are shown.
 - Several routes are shown, but only one will be built.

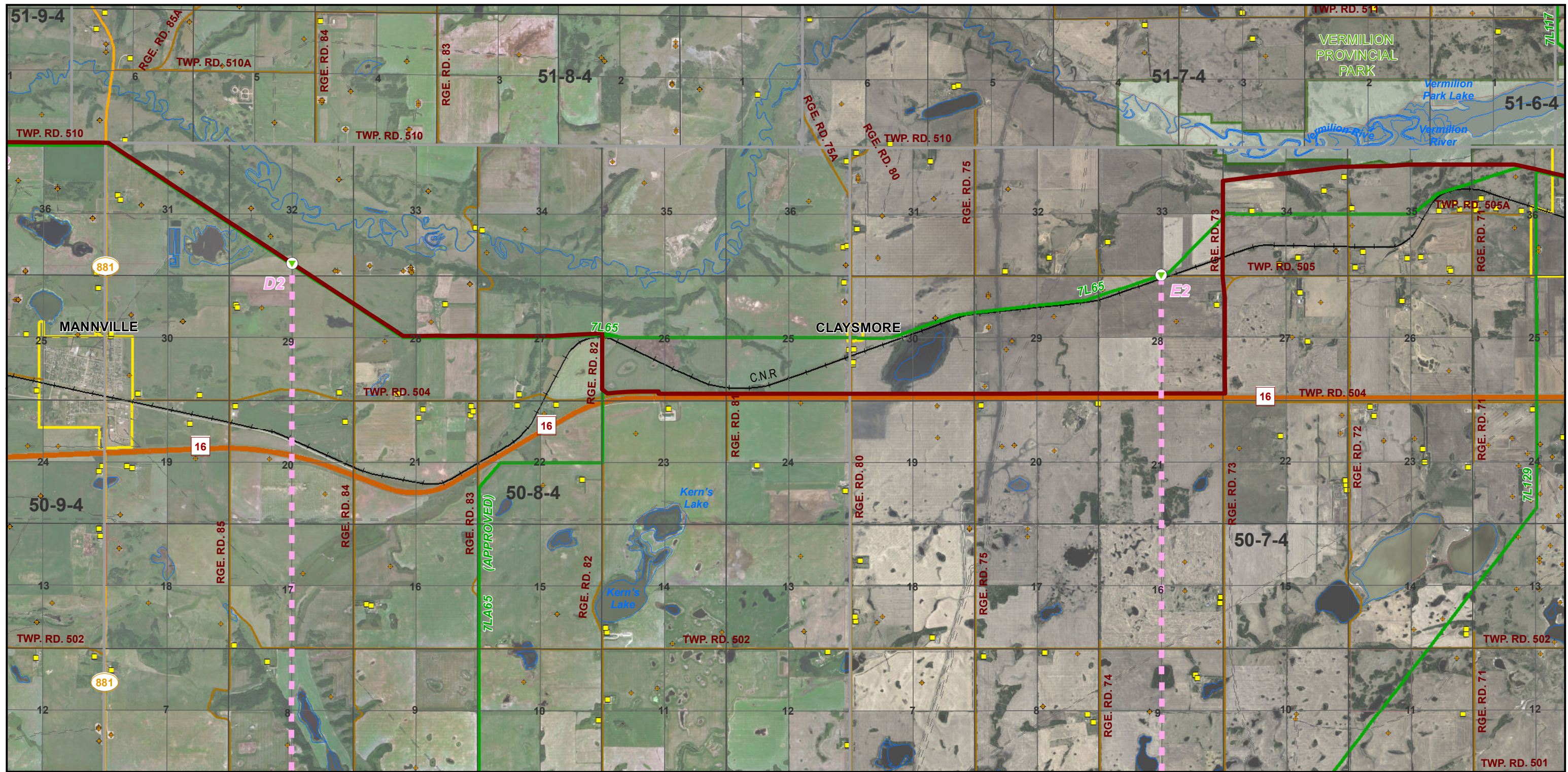


INDEX MAP

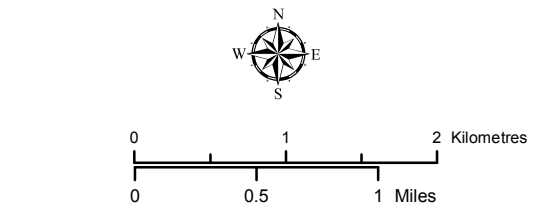


Buffalo Creek Transmission Project
ROUTE CONCEPTS MOSAIC
MAP 4 of 7

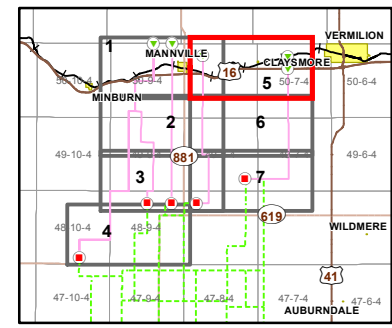
September 2019
 RS-7L333 - N1 - 02d



- Transmission Line Route Concepts
- AltaLink Transmission Line Route Concepts
- A1 Route Concept Node
- ▼ Route Concept Start Point
- Existing/ Approved 144 kV Transmission Line
- Provincial Park
- Previously Proposed 144 kV Route Rebuild
- Residence
- + Surface Well Site
- Railway
- Primary Highway
- Secondary Highway
- Provincial Park
- Road
- Town/ Village
- Existing Easement R/W
- Current Disposition
- Waterbody
- Watercourse
- ATCO/ AltaLink Service Territory Boundary



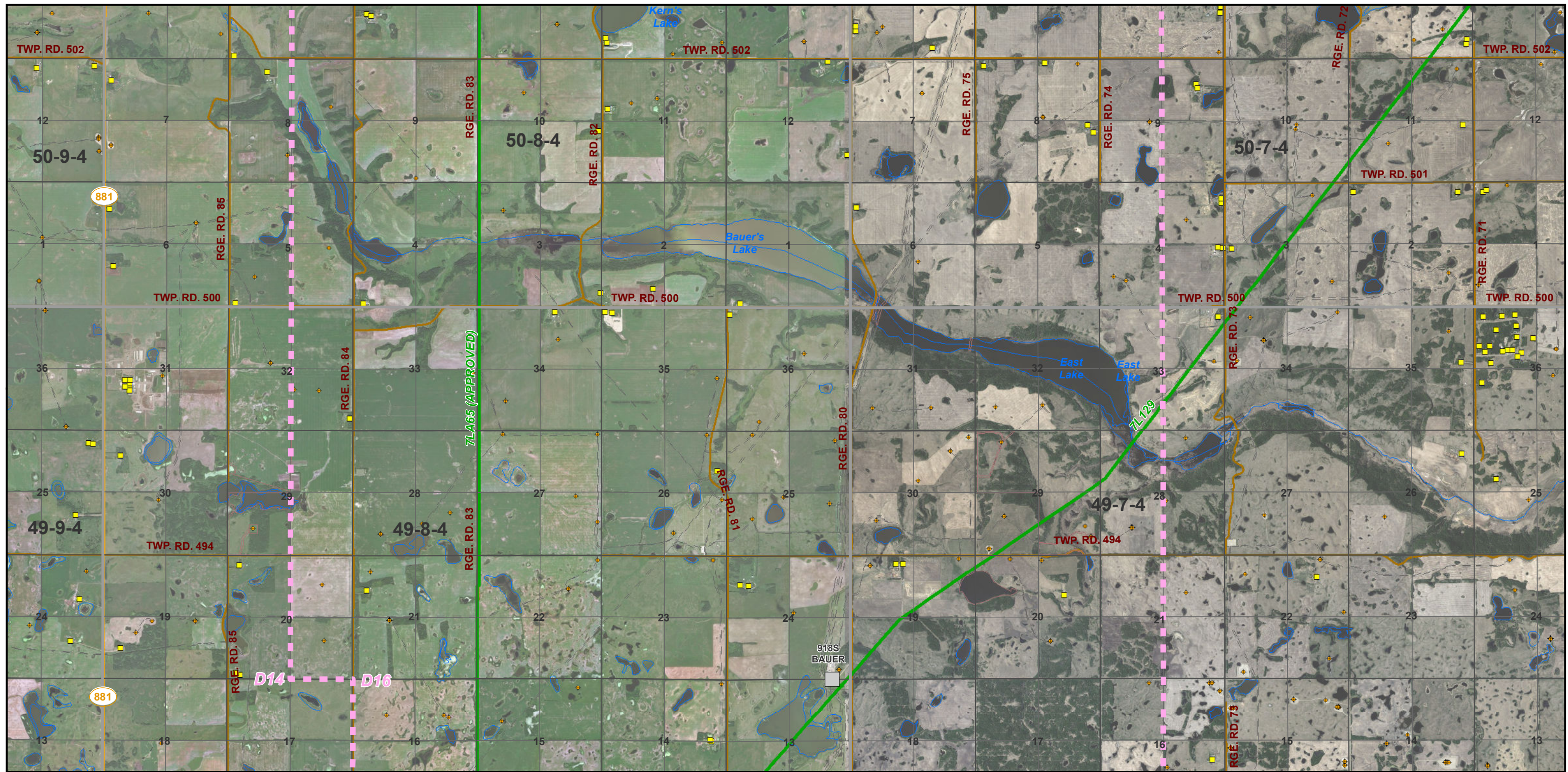
NOTES:
 - Only facilities in the vicinity of the project are shown.
 - Several routes are shown, but only one will be built.



Buffalo Creek Transmission Project
 ROUTE CONCEPTS MOSAIC
 MAP 5 of 7

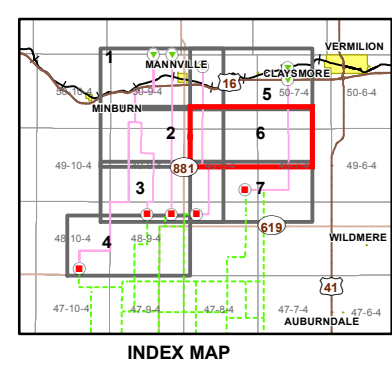
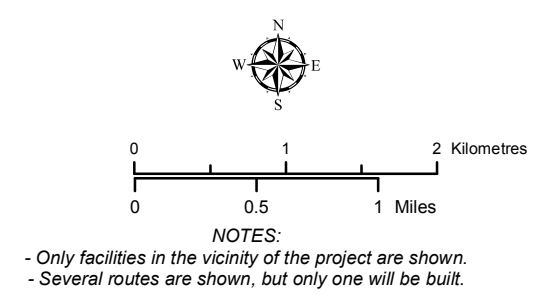
September 2019
 RS-7L333 - N1 - 02e

CREDIT NOTES
 Alberta Data Partnerships, IHS Markit, Imagery: DigitalGlobe 2012-2016



- Transmission Line Route Concepts
- AltaLink Transmission Line Route Concepts
- A1 Route Concept Node
- Existing/ Approved Substation
- Existing/ Approved 144 kV Transmission Line
- Residence
- + Surface Well Site
- Secondary Highway
- Road
- Existing Easement R/W
- Current Disposition
- Waterbody
- Watercourse
- ATCO/ AltaLink Service Territory Boundary

CREDIT NOTES
 Alberta Data Partnerships, IHS Markit, Imagery: DigitalGlobe 2012-2016



ATCO

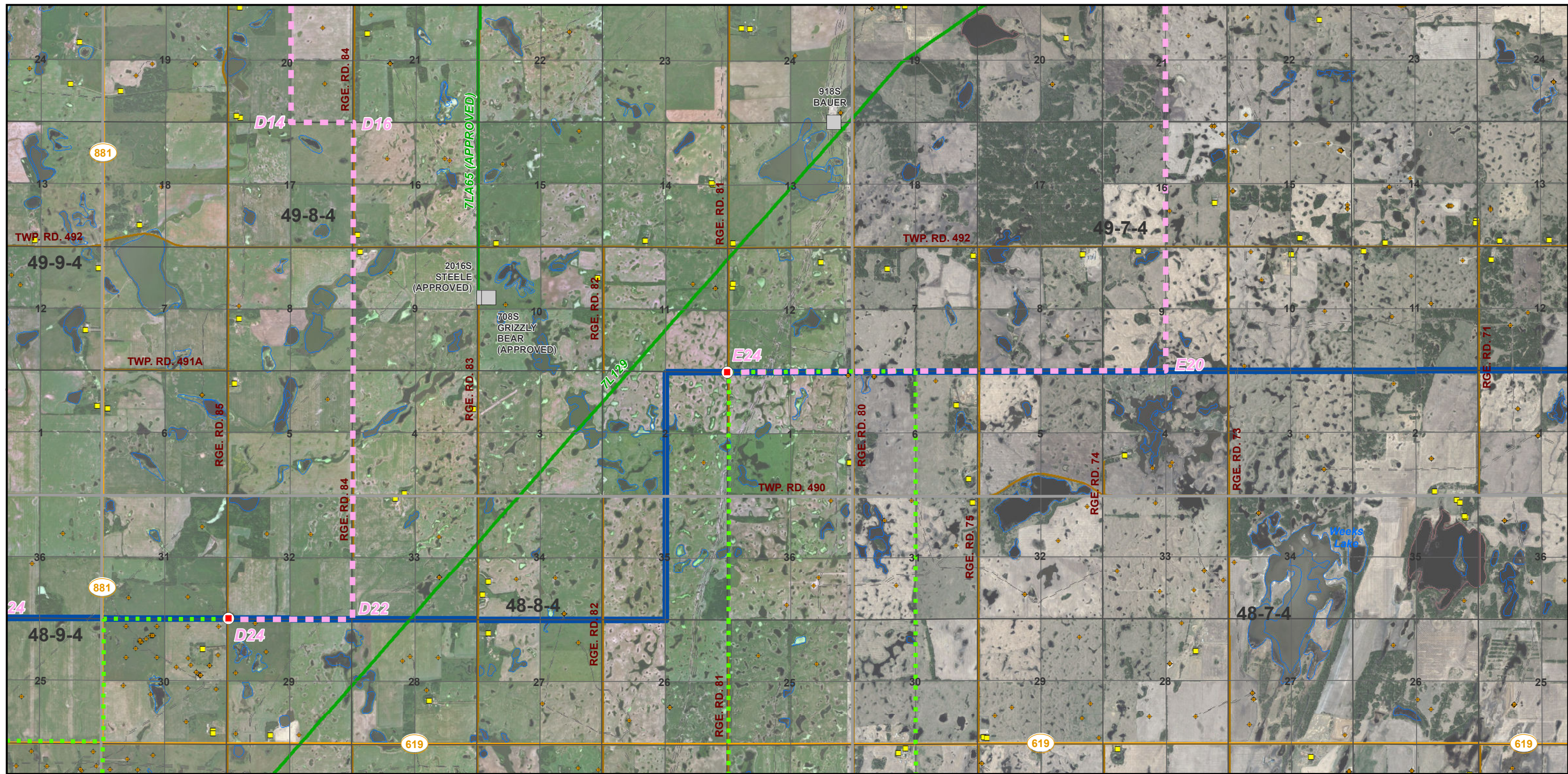
Buffalo Creek Transmission Project

ROUTE CONCEPTS MOSAIC

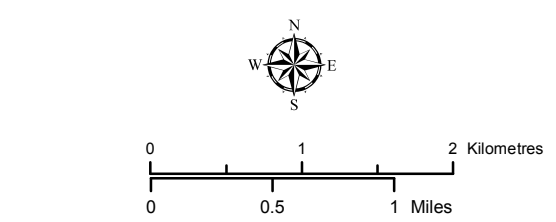
MAP 6 of 7

September 2019

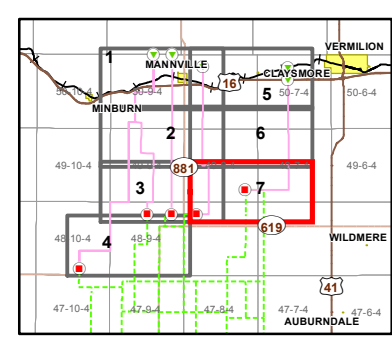
RS-7L333 - N1 - 02f



- Transmission Line Route Concepts
- AltaLink Transmission Line Route Concepts
- A1** Route Concept Node
- Route Concept End Point /AltaLink Connection Point
- Existing/ Approved Substation
- Existing/ Approved 144 kV Transmission Line
- Residence
- + Surface Well Site
- Secondary Highway
- Road
- Existing Easement R/W
- Current Disposition
- Waterbody
- ATCO/ AltaLink Service Territory Boundary



NOTES:
 - Only facilities in the vicinity of the project are shown.
 - Several routes are shown, but only one will be built.



CREDIT NOTES
 Alberta Data Partnerships, IHS Markit, Imagery: DigitalGlobe 2012-2016

This map is the property of ATCO. This map is not intended to be used in place of Alberta One Call.
 Always practice extreme caution when near power lines!



Buffalo Creek Transmission Project
 ROUTE CONCEPTS MOSAIC
 MAP 7 of 7

September 2019
 RS-7L333 - N1 - 02g