

ATCO

SHAPE the conversation



June 2020

BUFFALO CREEK TRANSMISSION PROJECT

Component of Provost to Edgerton and Nilrem to Vermilion Transmission System Reinforcement Project.

In September 2019, ATCO Electric Ltd. (ATCO) distributed project information about the Buffalo Creek Transmission Project to landholders in the vicinity of the planned transmission line and invited feedback on our preliminary routes. We also held an open house in October in Mannville for people to learn more about the Project.

Since then, we have been meeting with landholders in the vicinity of the routes under consideration.

To date, we have had over 200 conversations with landholders about the Project. We would like to thank everyone who provided their feedback.

Routing Update

The input we received during the first round of consultation has been compiled and examined. This input has been used in combination with other available information to refine the route options of the transmission lines. An updated Reference Map showing the potential route options is enclosed.

You continue to have the opportunity to provide your input on the Project. Please contact us at **1 855 420 5775** to share your thoughts.

If you received this package in the mail, updated Potential Route Mosaic Maps are enclosed showing the potential route options in relation to your property. Rejected options — routes no longer considered — are also shown. Potential Route Mosaic Maps for the entire length of the Project are available at www.ATCO.com (click on "Projects") or can be mailed to you upon request.



Project Details

ATCO Electric Ltd. (ATCO) and Altalink Management Ltd. (Altalink) were both directed by the Alberta Electric System Operator (AESO) to develop portions of the Provost to Edgerton and Nilrem to Vermilion Transmission Reinforcement Project (PENV).

ATCO is proposing the Buffalo Creek Transmission Project, that will consist of adding a new 144-kilovolt transmission line on steel mono-poles, starting from the existing 7L65 Transmission Line near the Village of Mannville into a new substation, to be known as Drury. ATCO has identified three target areas for the Drury substation, based on proximity to routes that are still being considered for the project. The target areas are shown on the ATCO Reference Map. A new single circuit 240-kilovolt transmission line will be constructed on wooden H-Frame structures from the Drury Substation to the service territory boundary. The 240 kV line will be built to 240 kV standard, but will be initially operated at 144 kV.

AltaLink will continue the transmission line to Nilrem Substation near Hardisty. The project is to reinforce and upgrade the transmission system capability of the central east sub-region and to ultimately improve capacity in the Lloydminster Area.

Next Steps

We are in the process of providing additional details on the updated routes and Drury substation locations being considered for the Project. The selected Drury locations are being evaluated for site suitability.

Route refinements going forward will typically involve localized adjustments to the line location in response to site-specific concerns and constraints.

For more information on route selection, please see the inside of this newsletter.

Your Input

All transmission line projects have impacts. Some can be mitigated while others cannot. Our goal is to find a location for the transmission line and substation that will have the least overall influence. However, we recognize that there are impacts that cannot be mitigated. Your input is very important when making these decisions.

The top concerns previously raised include:

- Agricultural operations impacts
- Safety and hazards near the facilities
- Impacts to aerial spraying operations
- Structure placement, resulting in new route suggestions

Additionally, concerns related to structure type and recreational impacts have also been identified.

If you have any further input to provide or require further information, please contact us.

Potential Routes

In this Project Update, you will find information on the potential routes for further consideration. The Update also contains information on the routes that have been removed from consideration. Stakeholder consultation efforts did identify a few new route segments that have been added for consideration. The routes are shown on the ATCO Reference Map. ATCO and AltaLink have coordinated our potential routes at the service territory boundary to ensure alignment.

Several routes are shown on the maps, however only one route will be constructed.

If you are not in the direct vicinity of the potential routes, you will not be contacted during our second round of personal consultations. Please check the enclosed maps to verify the location of your property in relation to the potential routes.

Parties on rejected routes will be removed from our project mailing list unless they request otherwise.

Route Selection

The potential routes were chosen based on consultation feedback and combined with other available information to refine the route options in an effort to reduce likely impacts. In some locations, preliminary route options were dropped from further consideration. In other locations, modified options were developed as a result of your feedback.

Consultation feedback is not the only factor that must be considered during the route selection process. We must also consider a range of important factors, including proximity to residences, environmentally sensitive areas, wetlands, existing infrastructure (such as other transmission lines, roads, well sites and pipelines), planned developments, agricultural operations, visual factors and construction requirements. Whenever possible, consideration is given to

routing new transmission lines along existing linear features, such as quarter section lines or roads.

The consultation process for this project is ongoing. That means we have yet to determine the route for the transmission line, and in some areas we may decide to propose several route options to the AUC in our application. Although multiple route options may be proposed, only one route will be built.

Project updates are available at **www.ATCO.com** (click on "Projects"). **Please contact us if you have questions, concerns or would like to request a personal consultation.**

THE SCHEDULE

We begin sharing information about the project to determine the best options.

We gather your input. Based on this input and other factors, route option(s) are selected.

ATCO submits an application to the AUC to build the proposed facility.

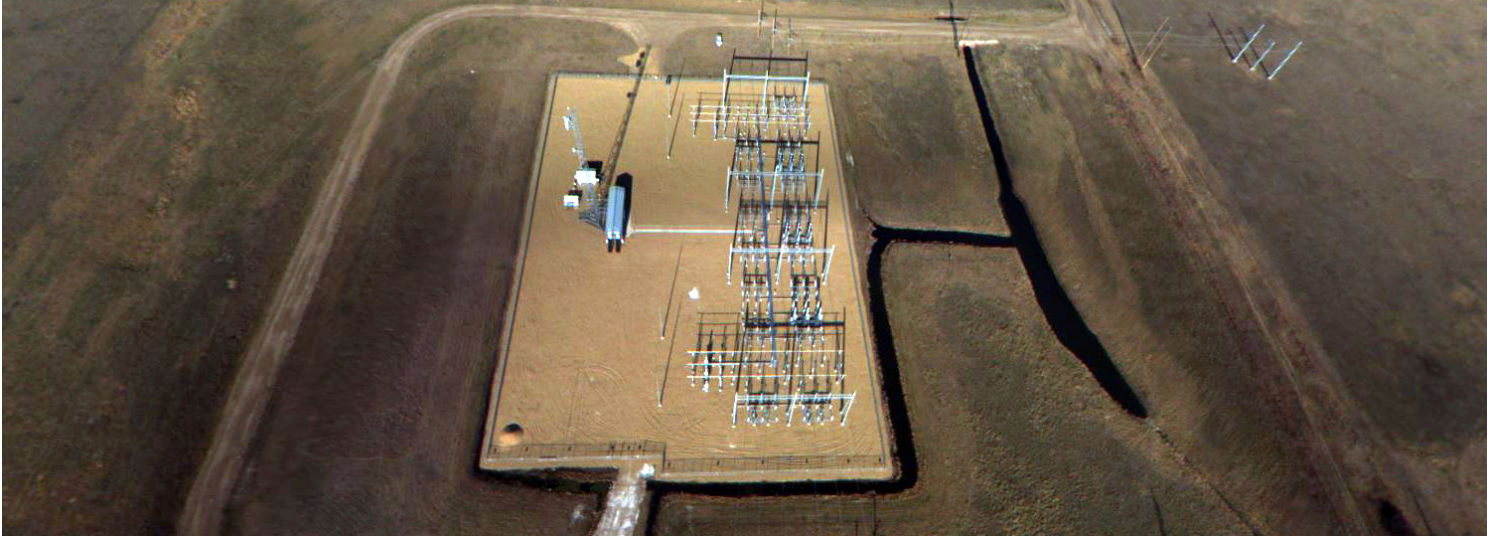
The AUC reviews the application by way of a public process.

If approved, construction of the new facility begins.

PUBLIC CONSULTATION

is a continuous process that occurs throughout the life of the project.

Drury Substation



ATCO is planning to develop a new substation, called Drury. Based upon landowner feedback during the consultation process, ATCO has identified potential regions for the Drury substation associated with the selected routes. Several substation study areas have been identified. The substation study areas are our focused area, but the final location of the substation may be outside of the study area.

The Drury substation is being developed so it can be expanded from 144 kV output to 240 kV in the future to meet regional electricity demand. The new substation will look similar to the

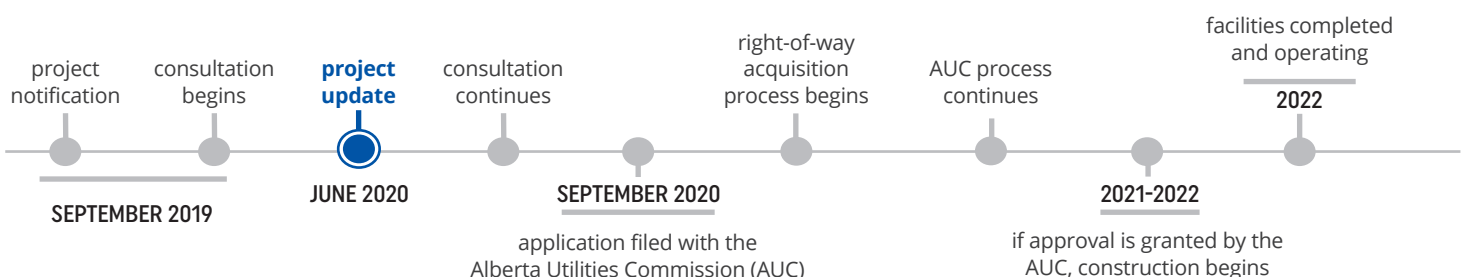
photo above. The new Drury substation property will be approximately 400 x 400 meters (m) to accommodate future expansion. The substation gravel pad and chain link fence will be 107 m x 51 m. Inside the substation fence there will be the four 144kV circuit breakers, as well as other electrical equipment and a small building containing other associated equipment.

The potential locations are depicted in the enclosed ATCO Reference Map and the Potential Route Mosaic Maps.

Environmental Surveys and Assessments

ATCO is undertaking environmental surveys and assessments to understand the presence of species in the project area. The wildlife, birds, amphibians, vegetation, soils and water bodies in the area of the routes needs to be understood as it is an important route assessment factor. ATCO has retained an environmental consultant to assist us with the environmental surveys and assessments of the current project routes. This work has begun in early spring 2020 and continue throughout 2021.

We are contacting landowners to discuss access to their land for the assessments.



What It Will Look Like

In September 2019 project information update, ATCO indicated that 2 structures were being considered for the project. The northern section of the project which connects to the 7L65 line is a double circuit steel mono-pole. This structure type will be used leading into the Drury Substation. South of the Drury Substation, a wooden H-Frame Structure has been selected. The planned structures are depicted below.

The connection of the new 144 kV transmission line to the existing 7L65 transmission line will be an 'in and out' design. This design will require a few more poles and associated guy wires to be positioned in the vicinity of the connection area.

The Right-of-Way

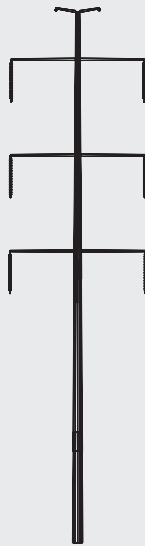
The term right-of-way refers to the area a transmission line occupies including areas on either side of the line. Rights-of-way must have a minimum width to ensure safety, prevent fire from falling trees and allow ongoing access for maintenance. For safety reasons, some general restrictions on the use of the land in the direct vicinity of the transmission line may apply, such as setbacks for development.

The typical right-of-way for this Project is variable and can range from 18 m to 34 m, based on the structure type. The right-of-way will be slightly narrower when following a road. For routes that are parallel to roads, the typical right of way

width for a mono-pole may be 11 m and for an H-Frame structure may be 23 m. These distances do not consider landscape obstacles that may require an adjustment to the typical corners and other right-of-way width.

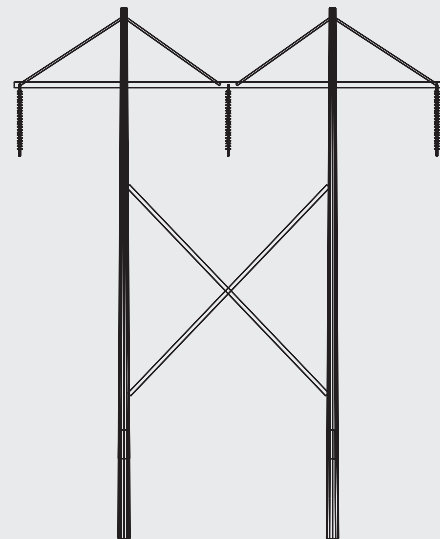
Once proposed routing has been submitted to the AUC, ATCO begins obtaining agreements with landholders to acquire the right-of-way.

Once the transmission line is constructed, landholders may continue to use the right-of-way, subject to the terms of agreements made between the landholder and ATCO.



Double Circuit Steel Mono-Pole

- Typical Structure Height 23 m
- Structure Height Range 19 to 27 m
- Typical Right-of-Way Width 18 m
- Typical Right-of-Way Width when Paralleling Roads 11 m
- Typical Distance between Structures 140 m
- Typical voltage 144 kV
- May require guy wires at corners and/or turns



Single Circuit H-Frame Structure

- Typical Structure Height 20 m
- Structure Height Range 16 to 27 m
- Typical Right-of-Way Width 34 m
- Typical Right-of-Way Width when Paralleling Roads 23 m
- Typical Distance between Structures 211 m
- Typical voltage 240 kV
- May require guy wires at corners and/or turns

* Final Design may vary

Maintenance and Operation of Electrical Facilities

For safe electric facilities and reliable service to customers, ATCO works diligently to maintain and operate our electrical facilities. We use multiple strategies to meet this objective, including:

- Complying with the Safety Codes Act, and Canadian Standards Association rules and standards
- Managing vegetation that could be in proximity to the conductor wires
- Enhancing communication systems while operating the electrical facilities
- Offices throughout the service territory allowing us to have operations employees near the facilities

The electrical facilities can be affected by the environment, such as line contacts, extreme weather (wind, lightning, fire) or wildlife interactions. ATCO monitors the electrical system 24 hours a day. If there was an issue or emergency situation on or near an electrical facility, ATCO works closely with the local emergency services to address the situation that arose and restore electricity to customers as soon as possible.

LOCAL BENEFITS

Upgrading the transmission system in your area will:

- Improve access to safe, secure and reliable power
- Allow future businesses to connect to Alberta's electric system
- Encourage investment in our province

If you are a local business, and would like to be considered for the ATCO approved vendors list, please contact us toll free at **1 800 668 2248**.



Definitions

Circuit

A circuit is a group of wires electricity flows through. ATCO's transmission lines can be single or double circuit. A single-circuit line has three wires and a double-circuit line has six. A transmission line may also have one or two shield wires on the top of the structures to protect the line from lightning.

Substation

A substation is a facility that connects powerlines into an integrated system. Substations typically contain equipment to safely control the flow of electricity and can convert the voltage of electricity from higher to lower voltages.

Consultation

A consultation is a meeting where advice, information and views are exchanged.

Kilovolt (kV)

A kilovolt is equal to one thousand volts. This unit of measurement is most commonly used when describing transmission and distribution lines. Distribution and transmission lines in Alberta carry between 4-kV (4,000 volts) and 500-kV (500,000 volts).

Right-of-way

A right-of-way is the use of a strip of land acquired for the construction and operation of a transmission line. The term right-of-way is also used to refer to the physical space a transmission line encompasses including areas on either side of the line.

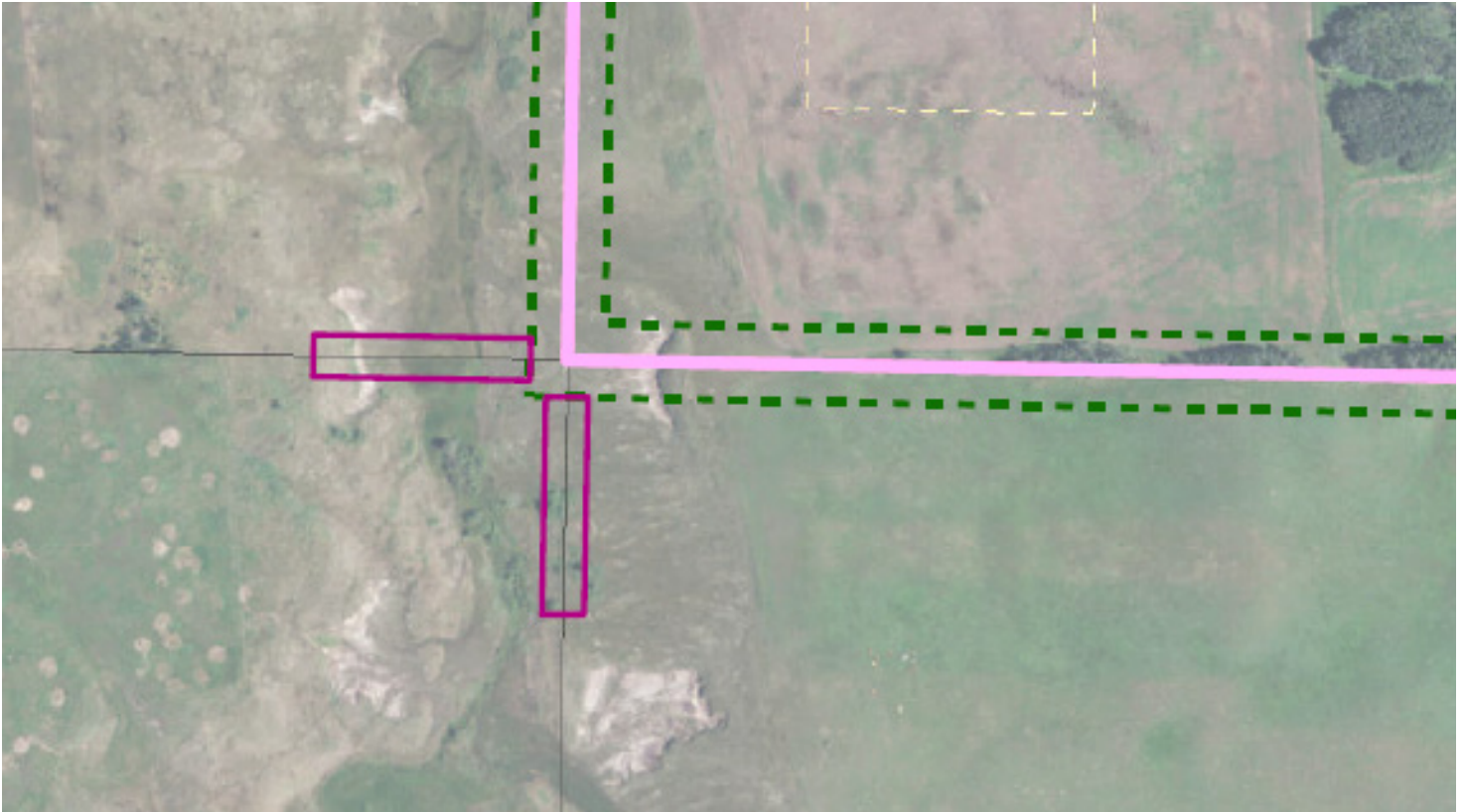
Termination

A termination is the point where a power line ends and connects to a substation.

Temporary Workspace

Temporary workspace may be required to accommodate the movement of equipment during construction. Temporary workspace may be developed parallel to the right-of-way in

locations. Also at corners or locations where the line bends, additional area may be required to string the transmission lines. These areas will vary in location and size.

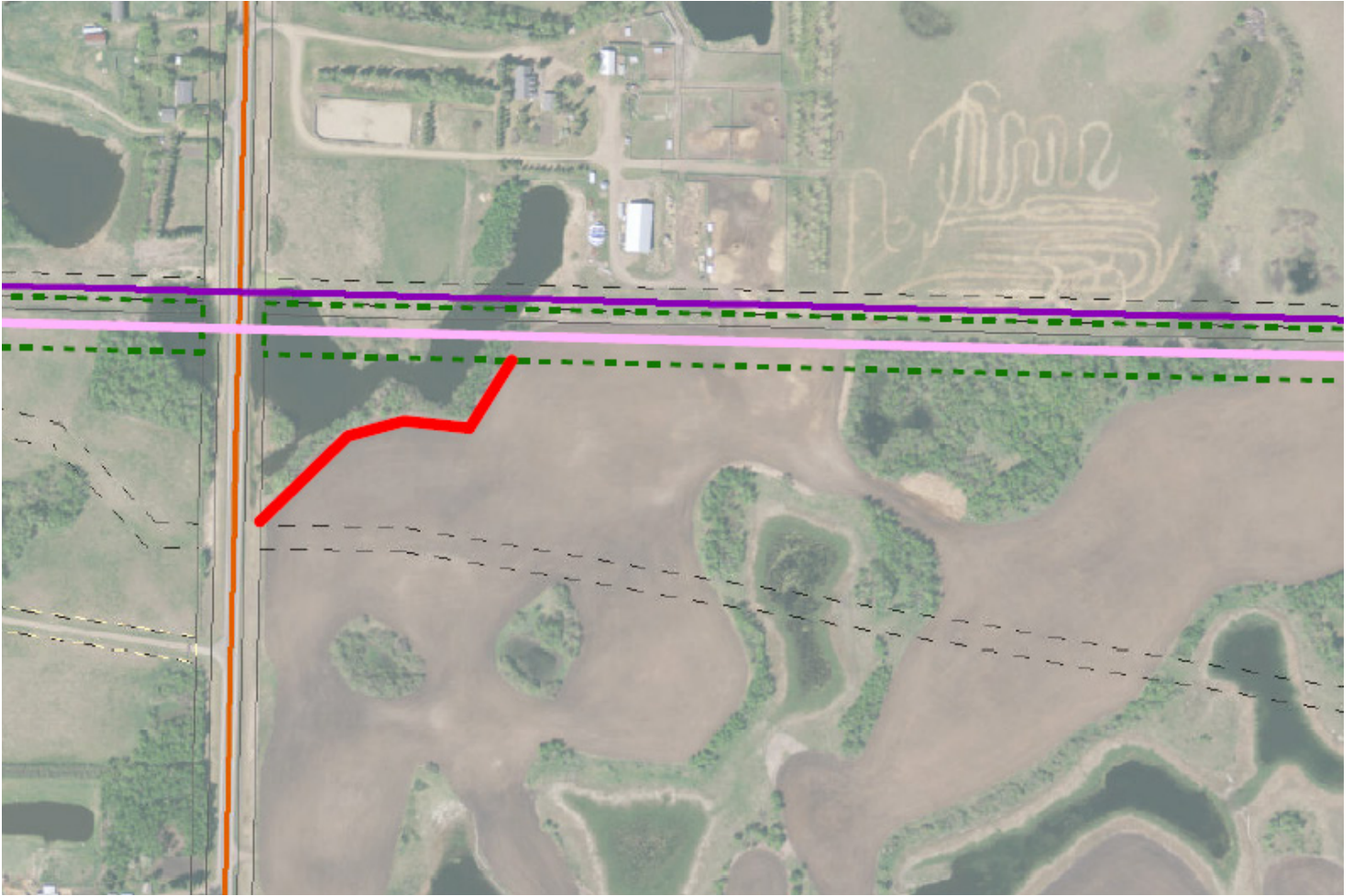


Transmission line right-of-way with temporary workspace at corners



Temporary workspace that is paralleling the transmission line right-of-way on side

Access Trails



Access trails may be required in areas where terrain conditions or the presence of environmentally sensitive areas, such as water bodies or wetlands make driving on the right-of-way impractical. In some situations the access trails may be temporary and only required to construct the line. Permanent access trails may be needed for ongoing access to facilitate maintenance activities in some areas. If required, temporary or permanent access trails will be approximately 6 to 15 m wide.

The access trails for this project have not been determined at this time.

Arrangements for access trails and temporary workspace will be discussed and negotiated with landholders individually. Actual dimensions of these features may vary with final plans.

If you own or occupy land in the vicinity of these access trails and temporary workspaces then your package will also contain one or more detailed Facility Detail Maps.

CONTACT INFORMATION

Your comments and concerns are important to us. Please contact us if you would like to learn more about this project, or if you would like to share information with us.

- Call us toll free at 1 855 420 5775 or
- Use the enclosed reply form and postage-paid envelope to share feedback or contact

Wendi Dehod

Environment & Land
ATCO
10035 - 105 Street
Edmonton, AB T5J 1C8

Email: consultation@ATCOelectric.com

Website: www.ATCO.com

(click on "Projects")

Fax: 780 420 5030

To learn more about AltaLink's portion of the Provost to Edgerton and Nilrem to Vermilion (PENV) Transmission Development, please contact:

AltaLink Management Ltd. (AltaLink)

Phone: 1 877 267 1453 (toll free)

Email: stakeholderrelations@altalink.ca

Website: www.altalink.ca/projects

Alberta Electric System Operator (AESO)

Phone: 1 888 866 2959

Email: stakeholder.relations@aeso.ca

Website: www.aeso.ca

Alberta Utilities Commission (AUC)

Phone: 780 427 4903

(for toll-free, dial 310 0000 first)

Email: consumer-relations@auc.ab.ca

Website: www.auc.ab.ca

ATCO

Alberta Electric System Operator

The AESO plans and operates Alberta's electricity grid and the wholesale electricity market safely, reliably and in the public interest of all Albertans. They are a not-for-profit organization with no financial interest or investment of any kind in the power industry. If you have any questions or concerns about the need for this Project you may contact the AESO directly. You can also make your questions or concerns known to an ATCO representative who will collect your personal information for the purpose of addressing your questions and/or concerns to the AESO. This process may include disclosure of your personal information to the AESO.

The AESO's Need Overview for the Provost to Edgerton and Nilrem to Vermilion Transmission System Reinforcement can be found online at: www.aeso.ca

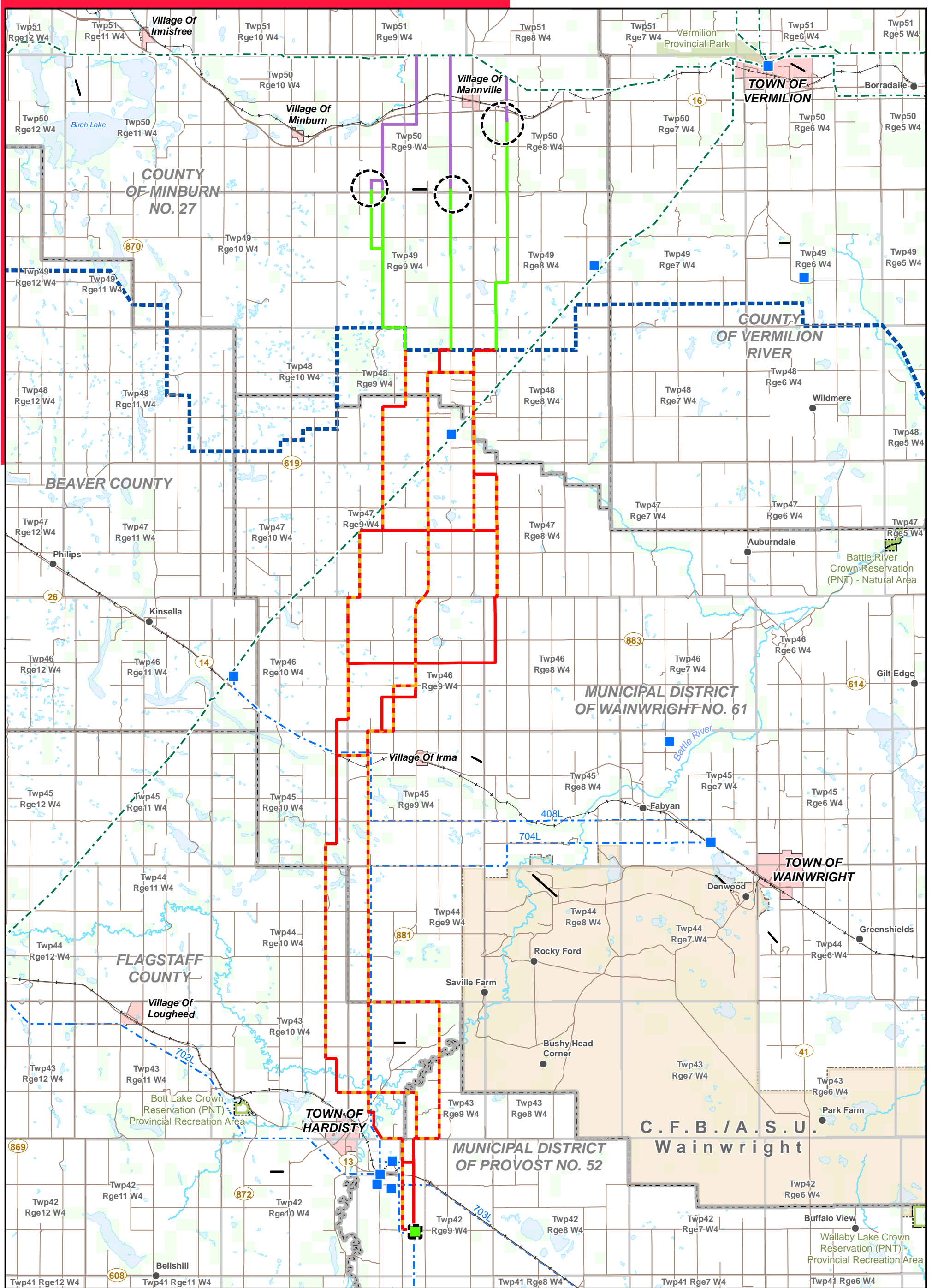
Approval Process

Alberta's electrical system is regulated by the Alberta Utilities Commission (AUC), an independent agency of the province that ensures the fair and responsible delivery of utility services. Before ATCO can begin construction on this project, the AUC must approve the facility application, which includes details such as location of electric transmission facilities and proposed alterations. For more information about how you can participate in the AUC approval process, please refer to the enclosed AUC brochure, *Participating in the AUC's Independent Review Process*.

If you are affected by the route(s) in our application, information you shared with us will be summarized in our facility application to the AUC. The AUC will consider this input in its review of the application.

Included in this package:

- **Reference Map** — reflects the entire project area
- **ATCO Reference Map** — to reflect ATCO portion of the project area
- **Potential Route Mosaic Maps** — maps are included to your specific land or area interests
- **Facility Detail Maps** — these maps provide additional detail to your land interest
- **AUC Brochure: *Participating in the AUC's Independent Review Process***
- Reply form and postage-paid envelope



LEGEND

Potential AltaLink Substation Upgrade	Existing AltaLink Transmission Line	Road
Existing Substation	Existing ATCO Transmission Line	Airport
Potential AltaLink 240 kV Transmission Line Alignment on Property	Service Area Boundary	Environmentally Significant Area
Potential AltaLink 240 kV Transmission Line Alignment along Road Allowance	Hamlet or Locality	Military Base
Potential 144 kV Transmission Line Alignment, ATCO	Municipal or County Boundary	Other Protected Area
Potential 240 kV Transmission Line Alignment, ATCO	Railway	Park
Drury Substation Study Area, ATCO	River or Stream	Water Body

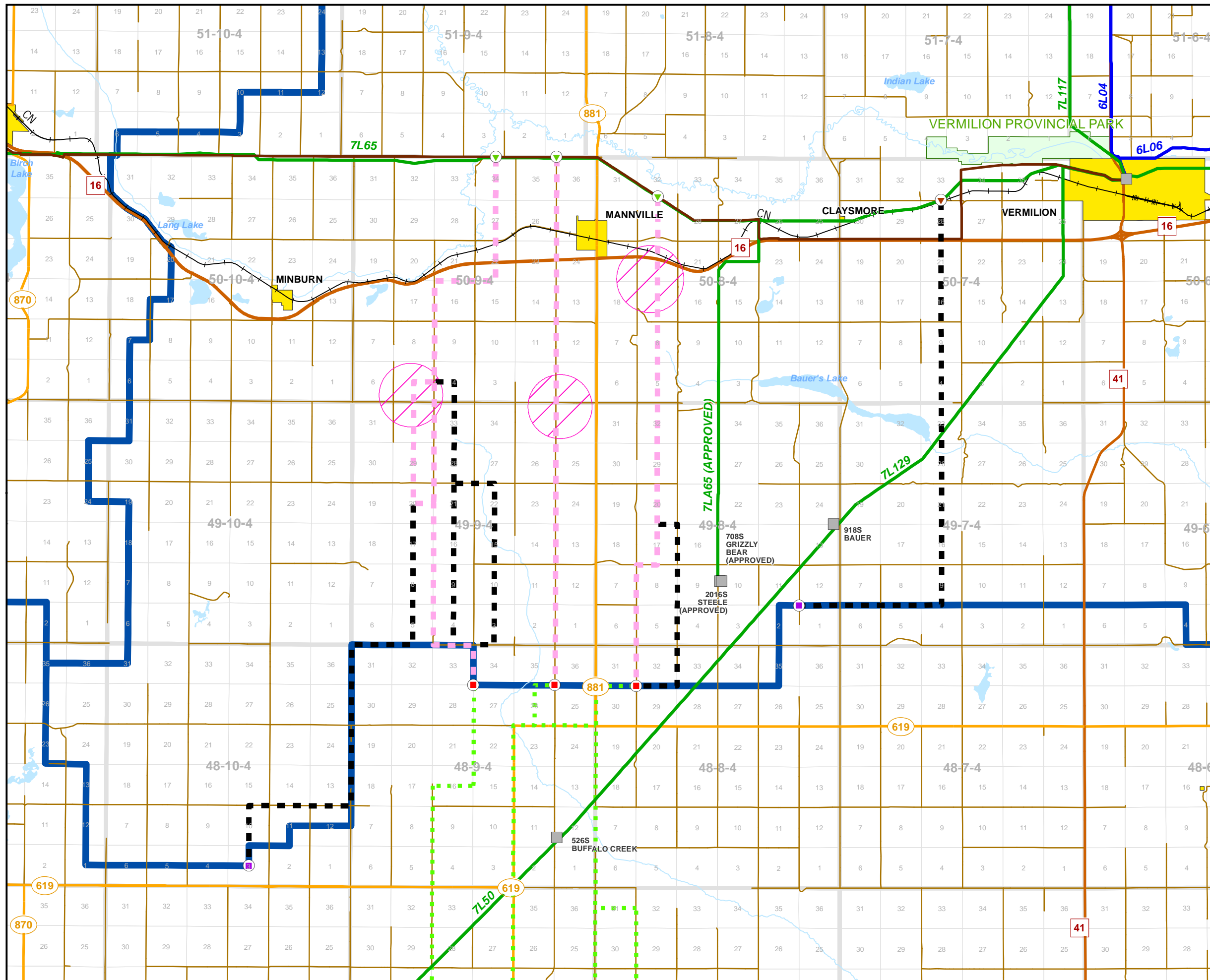
NO.: 35029329-6202
 DRAWN: SG - JACOBS
 FILE NO.: PENV-Overview
 REVISION: 0.00.00
 AL FOLDER: PENV
DATE: 2020-05-19

0 1 2 3 4 5 6 Kilometres
 0 1 2 3 Miles

Although there is no reason to believe that there are any errors associated with the data used to generate this product or in the product itself, users of these data are advised that errors in the data may be present.

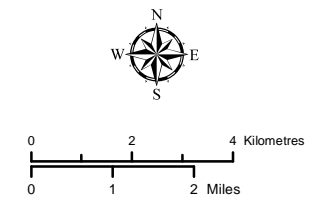
OVERVIEW MAP

POTENTIAL
 Provost to Edgerton and Niirem to Vermilion
 Transmission Development
 Joint Project Overview Map



- ATCO Transmission Line Potential Options
- AltaLink Transmission Line Potential Options
- ATCO Rejected Routes
- Potential Route Start Point
- Potential Route End Point /AltaLink Connection Point
- Rejected Route Start Point
- Rejected Route End Point /AltaLink Connection Point
- Potential Substation Study Areas
- Existing/ Approved Substation
- Existing/ Approved 144 kV Transmission Line
- Existing 72 kV Transmission Line
- Approved 144 kV Route Rebuild
- Primary Highway
- Secondary Highway
- Road
- Town/ Village
- Waterbody
- Watercourse
- Provincial Park
- ATCO/ AltaLink Service Territory Boundary

CREDIT NOTES
 Alberta Data Partnerships, IHS Markit



NOTES:
 - Only facilities in the vicinity of the project are shown.
 - Several routes are shown, but only one will be built.

This map is the property of ATCO. This map is not intended to be used in place of Alberta One Call.
 Always practice extreme caution when near power lines!



Buffalo Creek Transmission Project
 OVERVIEW REFERENCE MAP

June 2020

RS-7L333 - N2 - 01

Step 5: Consultation and negotiation (if applicable)*

The Commission supports ongoing efforts to reach an agreeable outcome for the applicant and all affected parties. The Commission encourages the applicant and those who have filed a statement to continue to attempt to resolve any outstanding issues. If all concerns can be satisfactorily resolved this may eliminate the need for a formal hearing. However, if there continues to be unresolved issues, those matters will typically be addressed at an AUC hearing.

Step 6: The public hearing process*

The AUC will issue a notice of hearing if there continues to be legitimate unresolved concerns with the application. The notice of hearing will provide a hearing date and location in addition to a process schedule. The AUC conducts public hearings in its Edmonton and Calgary hearing rooms and, where suitable venues exist, in communities closer to the proposed project area.

The public hearing process allows persons with standing that have unresolved concerns about the application, to express their views directly to a panel of Commission members.

An AUC hearing is a formal, evidence-based, court-like proceeding. The public can attend the hearing in person or listen to hearings online through the AUC's website.

Participants in a hearing can either represent themselves or be represented by a lawyer. In addition, participants may hire experts to assist in preparing and presenting evidence to support their position.

Cost assistance

A person determined by the Commission to be a local intervener can apply for reimbursement of reasonable costs. Those who hire a lawyer or technical experts must be aware that while reimbursement for the costs of legal and technical assistance is available under AUC Rule 009: *Local Intervener Funding*, recovery of costs is subject to the Commission assessing the value of the

contribution provided by the lawyer and technical experts. People with similar interests and positions are expected to work together to ensure that expenditures for legal or technical assistance are minimized and costs are not duplicated.

Step 7: The decision

The AUC's goal is to issue its written application decision no more than 90 days after the hearing is complete. The Commission can approve, or deny an application and can also make its approval conditional upon terms or conditions. All AUC decision reports are available to any member of the public on the AUC's website or by obtaining a printed copy from the AUC.

Step 8: Opportunity to appeal

An applicant or dissatisfied participant may formally ask the Court of Appeal of Alberta for permission to appeal a Commission decision. An application for permission to appeal must be filed within 30 days from the date the decision is issued.

An applicant or dissatisfied participant can also ask the Commission to review its decision. An application to review a Commission decision must be filed within 60 days from the date the decision is issued and satisfy the limited grounds described in AUC Rule 016: *Review and Variance of Commission Decisions*.

Step 9: Construction, operation and compliance

An applicant that receives approval to build and operate a facility from the Commission must adhere to any conditions that were set out in that approval. If concerns about compliance with approval conditions and post-construction operations cannot be resolved with the applicant, they can be brought to the AUC's attention for consideration. The AUC has significant compliance and enforcement powers for all approved applications. Additional information is available on the AUC website under "Compliance and enforcement."

*Opportunity for public involvement

The Alberta Utilities Commission is an independent, quasi-judicial agency of the Government of Alberta that ensures the delivery of Alberta's utility services take place in a manner that is fair, responsible and in the public interest.

Contact us

Phone: 310-4AUC (310-4282 in Alberta)
1-833-511-4AUC (1-833-511-4282 outside Alberta)
Email: info@auc.ab.ca

Eau Claire Tower 106 Street Building
1400, 600 Third Avenue S.W. 10th Floor, 10055 106 Street
Calgary, Alberta T2P 0G5 Edmonton, Alberta T5J 2Y2

The Alberta Utilities Commission is committed to ensuring that Albertans whose rights may be directly and adversely affected by a utility development project are informed of the application and have the opportunity to have their concerns heard, understood and considered.



**Participating
in the AUC's
independent
review process**

Application review process

Step 1: Public consultation prior to application by proponent

Step 2: Application filed with the AUC

Step 3: Public notice issued by the AUC

Step 4: Public submissions to the AUC

Step 5: Consultation and negotiation

Step 6: The public hearing process

Step 7: The decision

Step 8: Opportunity to appeal

Step 9: Construction, operation and compliance

www.auc.ab.ca

The AUC's regulatory role in needs and facility applications and its independent review and hearing process:

The AUC uses an established process, outlined in this brochure, to review social, economic and environmental impacts of facility projects to decide if approval is in the public interest. Approvals from the AUC are required for the construction, operation, alteration and decommissioning of transmission lines and electric substations.

Approvals are required for:

- The need for transmission upgrades.
- The route and location of transmission facilities.
- The siting of power plants, including renewables such as wind and solar more than five megawatts.

Sometimes a needs application is considered together with a facility application in a single hearing; sometimes separate hearings may be held to consider each application.

Step 1: Public consultation prior to application*

Prior to filing an application with the AUC for the approval of a proposed utility development, the applicant must engage in a public consultation program in the area of the proposed project, so that concerns may be raised, addressed and, if possible, resolved.

The application guidelines and requirements for facility applications can be found in AUC Rule 007: *Applications for Power Plants, Substations, Transmission Lines, Industrial System Designations and Hydro Developments*, and AUC Rule 020: *Rules Respecting Gas Utility Pipelines*.

Potentially affected parties are strongly encouraged to participate in the initial public consultation, as early involvement in discussions with an applicant may lead to greater influence on project planning and what is submitted to the AUC for approval.

The Alberta Electric System Operator, as the system planner, will notify potentially affected stakeholders of applications on the need for transmission development.

Step 2: Application filed with the AUC

When the participant involvement requirements have been completed, the applicant files its application with the AUC through a public filing system, called the eFiling System, on the AUC website.

The application is then reviewed to ensure the information required by the Commission is included. If the required information is not provided, the AUC may close the application or request more

information from the applicant. In the application, any issues that were raised during the public consultation and any related amendments to the proposal should be identified. All unresolved objections or concerns identified during the public consultation must be described in the application.

Step 3: Public notice

The AUC generally issues a notice by mail directly to those who live, operate a business or occupy land in the project area who may be affected by the Commission's decision on the proposed project. The notice for larger facility projects with potentially greater impacts may also be published in local newspapers.

The notice will specify a submission deadline. The information required by this deadline is general in nature as outlined in Step 4. Additional opportunities to provide evidence and additional information will arise after this deadline.

Step 4: Public submissions to the AUC*

The AUC review process is referred to as a proceeding. Anyone with unresolved objections or concerns about the application can file a brief written statement with the AUC on the proceeding. The easiest way to file a statement is to fill out the form through the eFiling System found on the AUC website. The statement must include your contact information, where you reside or own property in relation to the proposed facility, your concern or interest in the application, an explanation of your position and what you feel the AUC should decide.

The AUC uses the information it gathers through the forms to decide whether to hold a hearing on the application(s). The Commission must hold a hearing if a person can demonstrate that he or she has rights that may be directly or adversely affected by the Commission's decision on the application. Such a person is said to have standing before the Commission. If the AUC decides to hold a hearing, the AUC will provide further opportunities for participants with standing to understand the application and present their position on the application either in writing or in person.

Subject to some limited exceptions, all information and materials provided as part of an AUC proceeding will become part of the public record and will be available through the eFiling System. The AUC's treatment of some types of information as confidential is rare and only available under limited circumstances to ensure that the AUC's process is open and transparent.

AUC eFiling System

The eFiling System is the tool that the AUC uses to manage applications and submissions in its proceeding-based review. The eFiling System gives access to all public documents associated with an application and is how to provide your input to the AUC and monitor the related proceeding filings. Those who do not have access to the internet can send submissions, evidence and other material by mail and the AUC will upload the submission on their behalf.

***Opportunity for public involvement**

BUFFALO CREEK TRANSMISSION PROJECT - COVID-19 UPDATE

June 2020

As we navigate the challenges of the COVID-19 pandemic, the health and safety of our customers, communities and our people are what we care about most.

ATCO has been closely monitoring the developments associated with COVID-19. Since then, our teams across the globe have been preparing for and responding to this rapidly changing situation. To ensure the health and safety of our employees and to sustain operations through the pandemic, we have implemented several enhanced protocols, including:

- Physical distancing
- Enhanced personal and workplace hygiene practices
- Cancelling or postponing large events and employee gatherings
- Following the direction of the provincial health authorities

To ensure our employees go home safely each day and to protect those in the communities we serve, our people who have direct interactions with customers will be practicing responsible physical distancing and, in some instances, may wear enhanced personal protective equipment if needed.

For Buffalo Creek Transmission Project:

Being respectful to all that is going at this time with COVID-19, we would like to continue consultation with you for the Buffalo Creek Transmission project.

In order to do so, we will keep physical distancing protocols in mind. We can arrange in-person meetings being mindful of physical distancing and proper hygiene practices. Alternatively, we can arrange meeting by phone or through video conferencing platforms like Skype, FaceTime, or Zoom. We will keep these measures in place until the health authorities indicate that physical distancing practices can ease.

In the coming weeks, an ATCO representative will contact you to discuss the project and arrange time for consultation. If you need to postpone your consultation to a later date, do not hesitate to let us know.

If you have any questions or concerns, please feel free to call us toll free **1 855 420 5775** or by email consultation@atcoelectric.com

atco.com

ATCO



SHAPE THE CONVERSATION

BUFFALO CREEK TRANSMISSION PROJECT

REPLY FORM

10035 - 105 Street, Edmonton, Alberta, T5J 1C8

CONTACT INFORMATION

Date (DD/MM/YYYY): _____

First Name: _____

Last Name: _____

Company/Organization Name (if applicable):

Mailing Address: _____

Home Phone: _____

Cell Phone: _____

Business Phone: _____

Email: _____

Please help us identify new contacts

You were contacted about this project because ATCO identified you or your company/organization as having a land interest in the vicinity of the project. Is there anyone else associated with your property, such as other owners, renters or occupants, who we should also contact? If so, please provide the name(s), contact information and their land interest.

I would like to receive all future correspondence about this project by Email (If this is your preference, please check the box)

AN IMPORTANT MESSAGE ABOUT PRIVACY: *The information on this form is being collected to identify concerns with proposed changes to and/or the siting of power transmission facilities, and to comply with the Alberta Utilities Commission (AUC) rules regarding the submission of transmission facilities applications. This information may be provided to electric facility owners, Alberta's Surface Rights Board, and the Alberta Electric System Operator. Your comments and personal information may also be publicly accessible through the AUC website, should it be submitted to the AUC as part of a transmission facility application – subject to Alberta's Freedom of Information and Protection of Privacy Act. **If you wish to keep your information confidential, you must make a request to the AUC (403-592-4376).** If you have questions or concerns about your information or how it may be used or disclosed as part of this process, please contact us (see contact information below).*

Please let us know by checking a box below if either statement applies to you:

I do not have concerns with the Project based on the information provided

I have concerns with the Project based on the information provided

Please share any comments or concerns that you have about the Project:

HOW TO SUBMIT: Please use the enclosed envelope to return by mail or fax to 780-420-5030. If you would like more information about the project, please contact us toll free 1-855-420-5775 or by Email: consultation@atcoelectric.com.