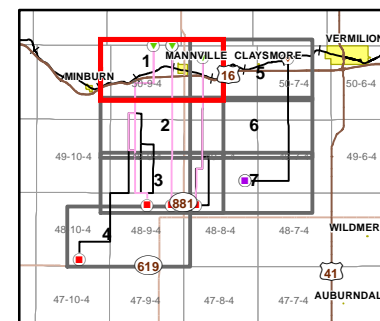
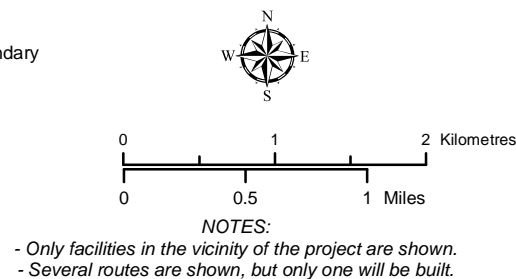


- ATCO Transmission Line Potential Options
- ATCO Rejected Routes
- A1** Potential Route Node
- A1** Rejected Route Node
- Potential Route Start Point
- Potential Route End Point /AltaLink Connection Point
- Rejected Route Start Point
- Rejected Route End Point /AltaLink Connection Point
- Existing/ Approved 144 kV Transmission Line
- Approved 144 kV Route Rebuild
- Residence
- ◆ Surface Well Site
- Railway
- Primary Highway
- Secondary Highway
- Road
- Town/ Village
- Existing Easement R/W
- Current Disposition
- Waterbody
- Watercourse
- ATCO/ AltaLink Service Territory Boundary



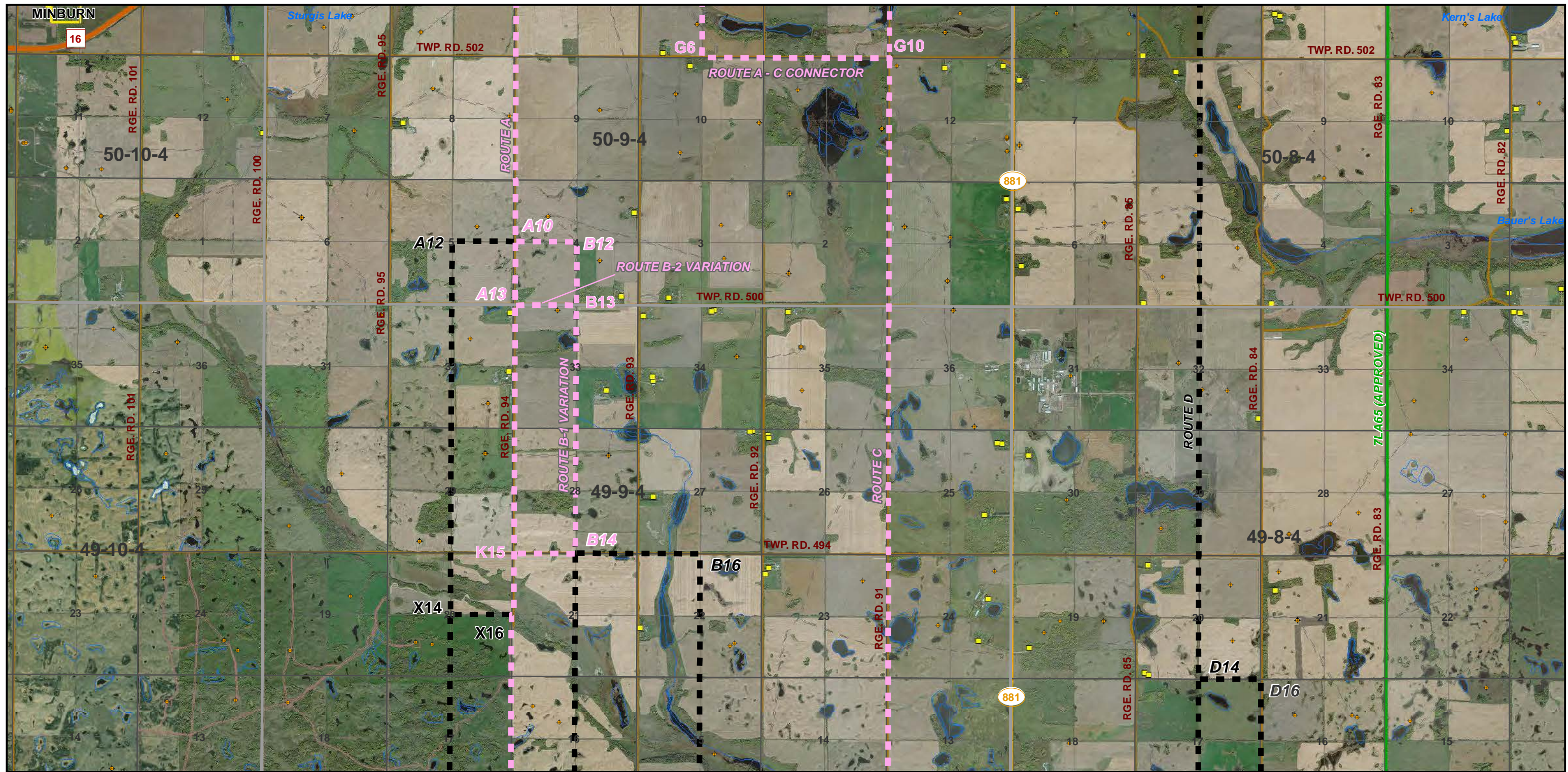
Buffalo Creek Transmission Project
REVISED POTENTIAL ROUTES
 MOSAIC MAP 1 of 7

October 2020

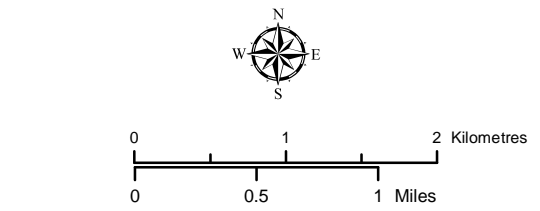
RS-7L333 - N3 - 02a

CREDIT NOTES
 Alberta Data Partnerships, Government of Alberta, Government of Canada, IHS Markit, AltaLink, ATCO, Imagery: DigitalGlobe 2019

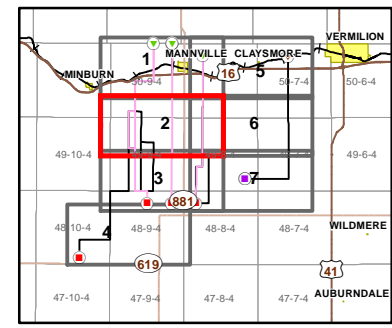
This map is the property of ATCO. This map is not intended to be used in place of Alberta One Call.
 Always practice extreme caution when near power lines!



- ATCO Transmission Line Potential Options
- ATCO Rejected Routes
- A1 Potential Route Node
- A1 Rejected Route Node
- Potential Route Start Point
- Potential Route End Point /AltaLink Connection Point
- Rejected Route Start Point
- Rejected Route End Point /AltaLink Connection Point
- Existing/ Approved 144 kV Transmission Line
- Residence
- Surface Well Site
- Primary Highway
- Secondary Highway
- Road
- Town/ Village
- Existing Easement R/W
- Current Disposition
- Waterbody
- Watercourse
- ATCO/ AltaLink Service Territory Boundary



NOTES:
 - Only facilities in the vicinity of the project are shown.
 - Several routes are shown, but only one will be built.



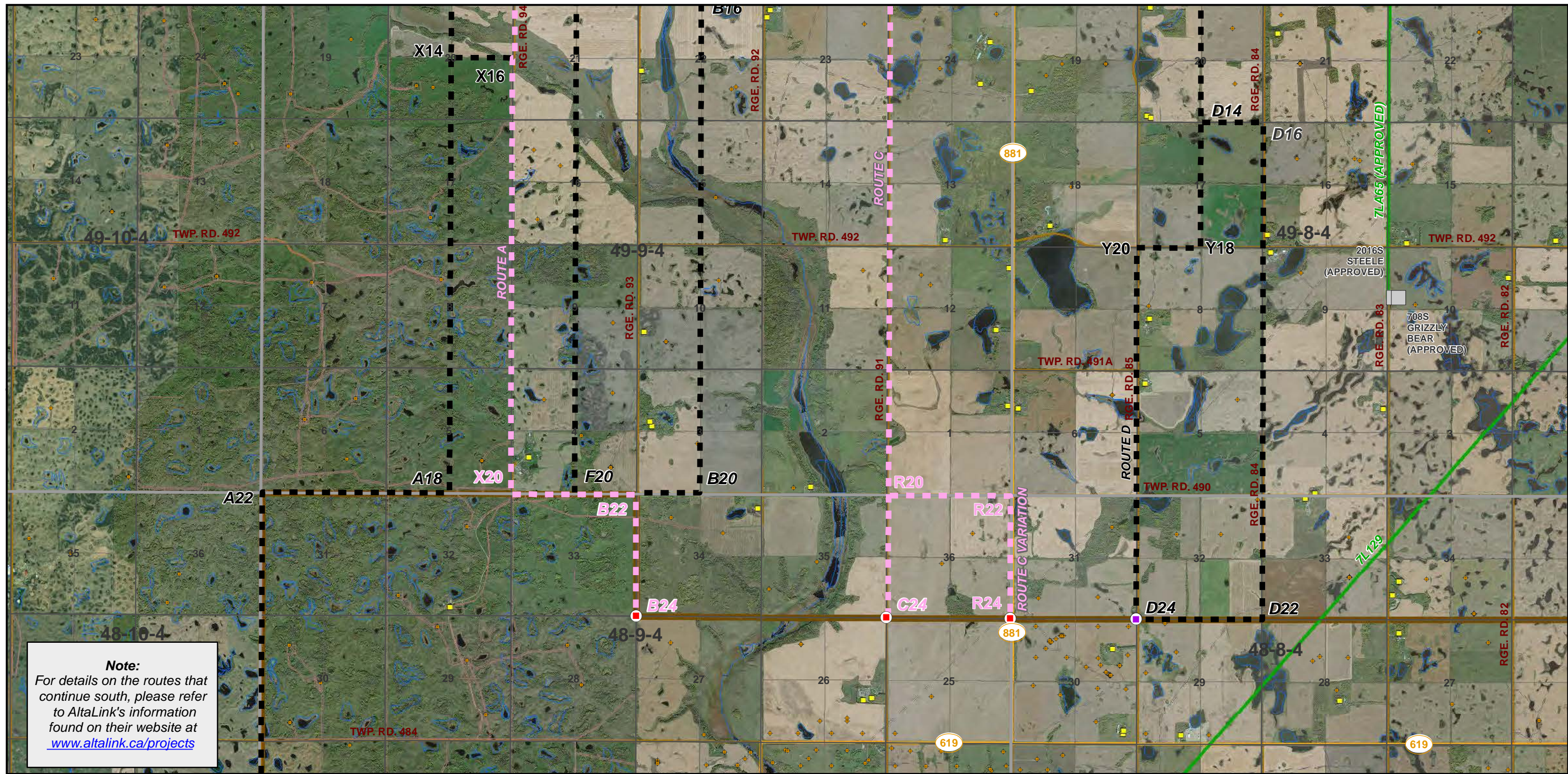
Buffalo Creek Transmission Project
 REVISED POTENTIAL ROUTES
 MOSAIC MAP 2 of 7

October 2020

RS-7L333 - N3 - 02b

CREDIT NOTES
 Alberta Data Partnerships, Government of Alberta, Government of Canada, IHS Markit, AltaLink, ATCO, Imagery: DigitalGlobe 2019

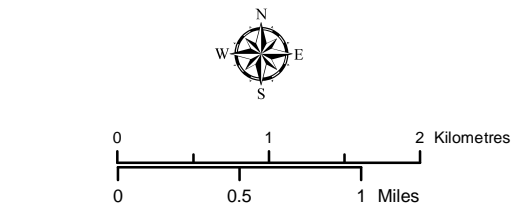
This map is the property of ATCO. This map is not intended to be used in place of Alberta One Call.
 Always practice extreme caution when near power lines!



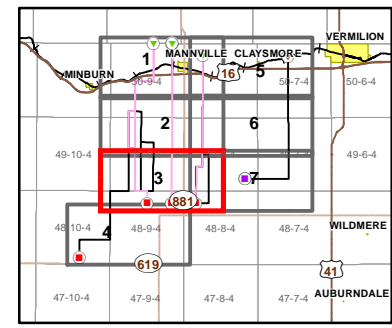
Note:
 For details on the routes that continue south, please refer to AltaLink's information found on their website at www.altalink.ca/projects

- ATCO Transmission Line Potential Options
- ATCO Rejected Routes
- A1 Potential Route Node
- A1 Rejected Route Node
- Potential Route Start Point
- Potential Route End Point /AltaLink Connection Point
- Rejected Route Start Point
- Rejected Route End Point /AltaLink Connection Point
- Existing/ Approved Substation
- Existing/ Approved 144 kV Transmission Line
- Residence
- + Surface Well Site
- Secondary Highway
- Road
- Existing Easement R/W
- Current Disposition
- Waterbody
- Watercourse
- ATCO/ AltaLink Service Territory Boundary

CREDIT NOTES
 Alberta Data Partnerships, Government of Alberta, Government of Canada, IHS Markit, AltaLink, ATCO, Imagery: DigitalGlobe 2019



NOTES:
 - Only facilities in the vicinity of the project are shown.
 - Several routes are shown, but only one will be built.



INDEX MAP

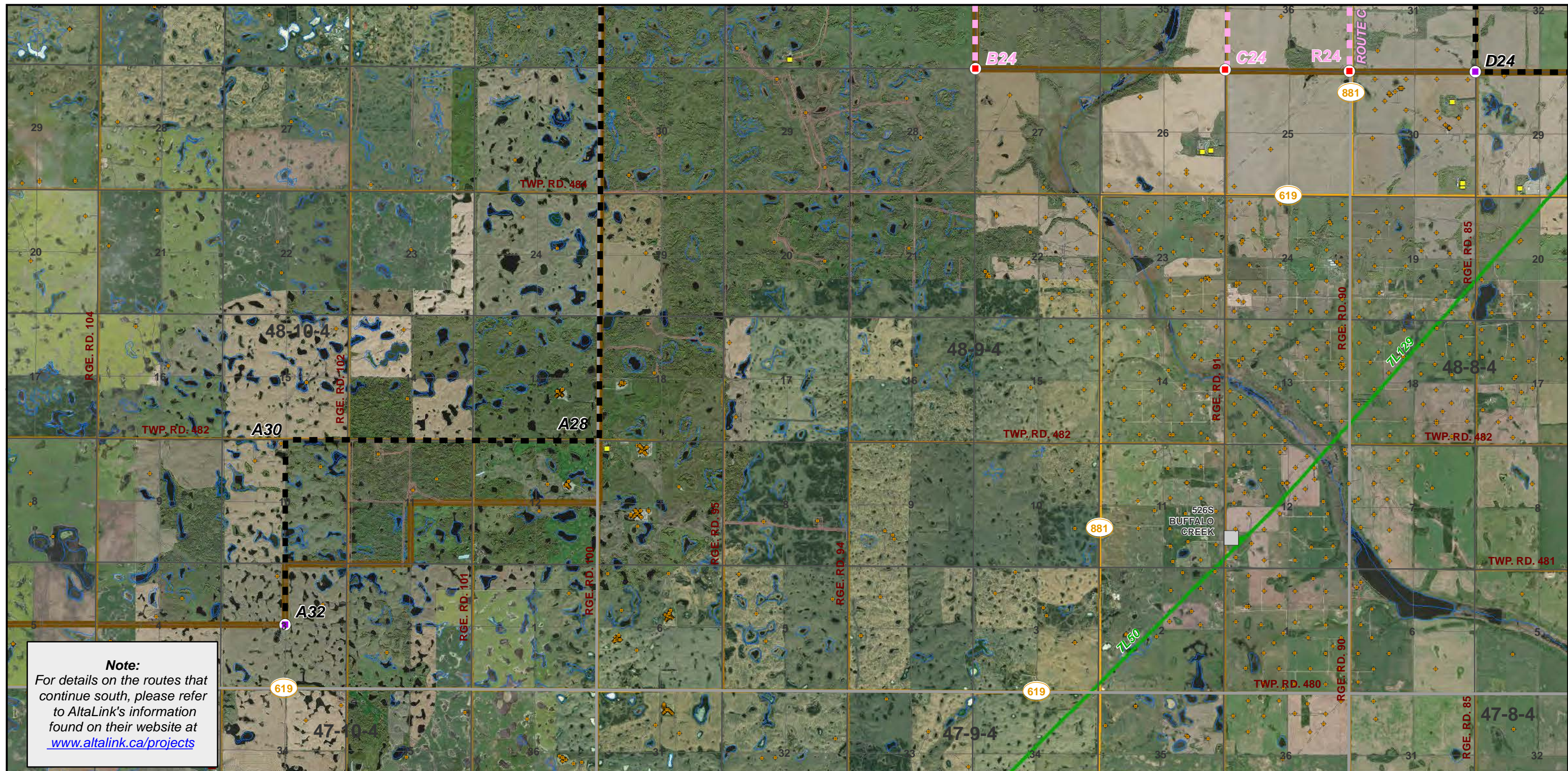


Buffalo Creek Transmission Project

REVISED POTENTIAL ROUTES
 MOSAIC MAP 3 of 7

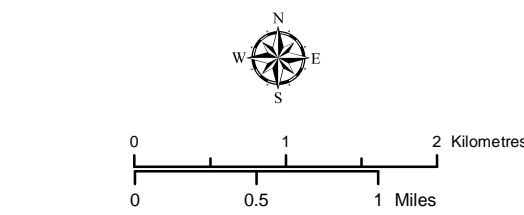
October 2020

RS-7L333 - N3 - 02c

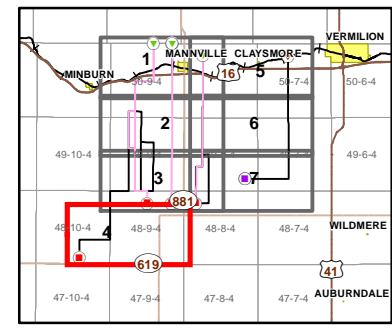


Note:
 For details on the routes that continue south, please refer to AltaLink's information found on their website at www.altalink.ca/projects

- | | |
|---|--|
| <ul style="list-style-type: none"> --- ATCO Transmission Line Potential Options ATCO Rejected Routes A1 Potential Route Node A1 Rejected Route Node ● Potential Route Start Point ● Potential Route End Point /AltaLink Connection Point ● Rejected Route Start Point ● Rejected Route End Point /AltaLink Connection Point Existing/ Approved Substation --- Existing/ Approved 144 kV Transmission Line | <ul style="list-style-type: none"> Residence + Surface Well Site Secondary Highway Road Existing Easement R/W Current Disposition Waterbody Watercourse ATCO/ AltaLink Service Territory Boundary |
|---|--|



NOTES:
 - Only facilities in the vicinity of the project are shown.
 - Several routes are shown, but only one will be built.

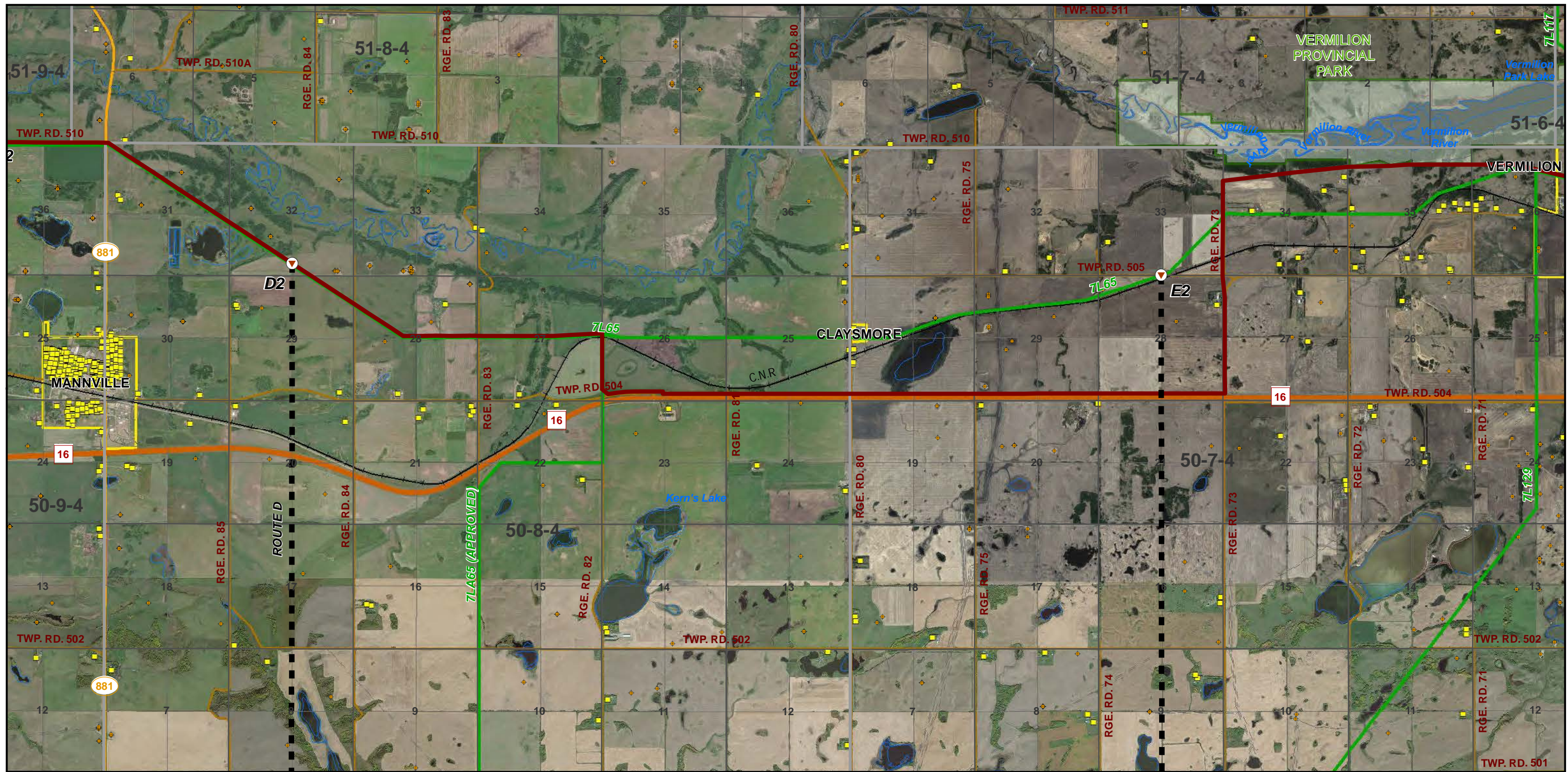


Buffalo Creek Transmission Project
REVISED POTENTIAL ROUTES
MOSAIC MAP 4 of 7

October 2020

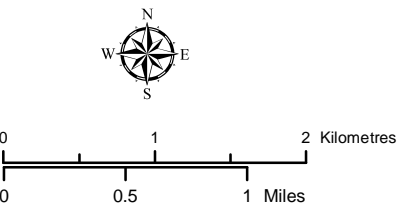
RS-7L333 - N3 - 02d

CREDIT NOTES
 Alberta Data Partnerships, Government of Alberta, Government of Canada, IHS Markit, AltaLink, ATCO, Imagery: DigitalGlobe 2019

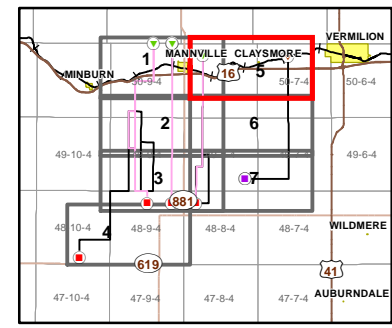


- ATCO Transmission Line Potential Options
- ATCO Rejected Routes
- A1** Potential Route Node
- A1** Rejected Route Node
- Potential Route Start Point
- Potential Route End Point /AltaLink Connection Point
- Rejected Route Start Point
- Rejected Route End Point /AltaLink Connection Point
- Existing/ Approved 144 kV Transmission Line
- Provincial Park
- Approved 144 kV Route Rebuild
- Residence
- Surface Well Site
- Railway
- Primary Highway
- Secondary Highway
- Provincial Park
- Road
- Town/ Village
- - Existing Easement R/W
- Current Disposition
- Waterbody
- Watercourse
- ATCO/ AltaLink Service Territory Boundary

- Current Disposition
- Waterbody
- Watercourse
- ATCO/ AltaLink Service Territory Boundary



NOTES:
 - Only facilities in the vicinity of the project are shown.
 - Several routes are shown, but only one will be built.



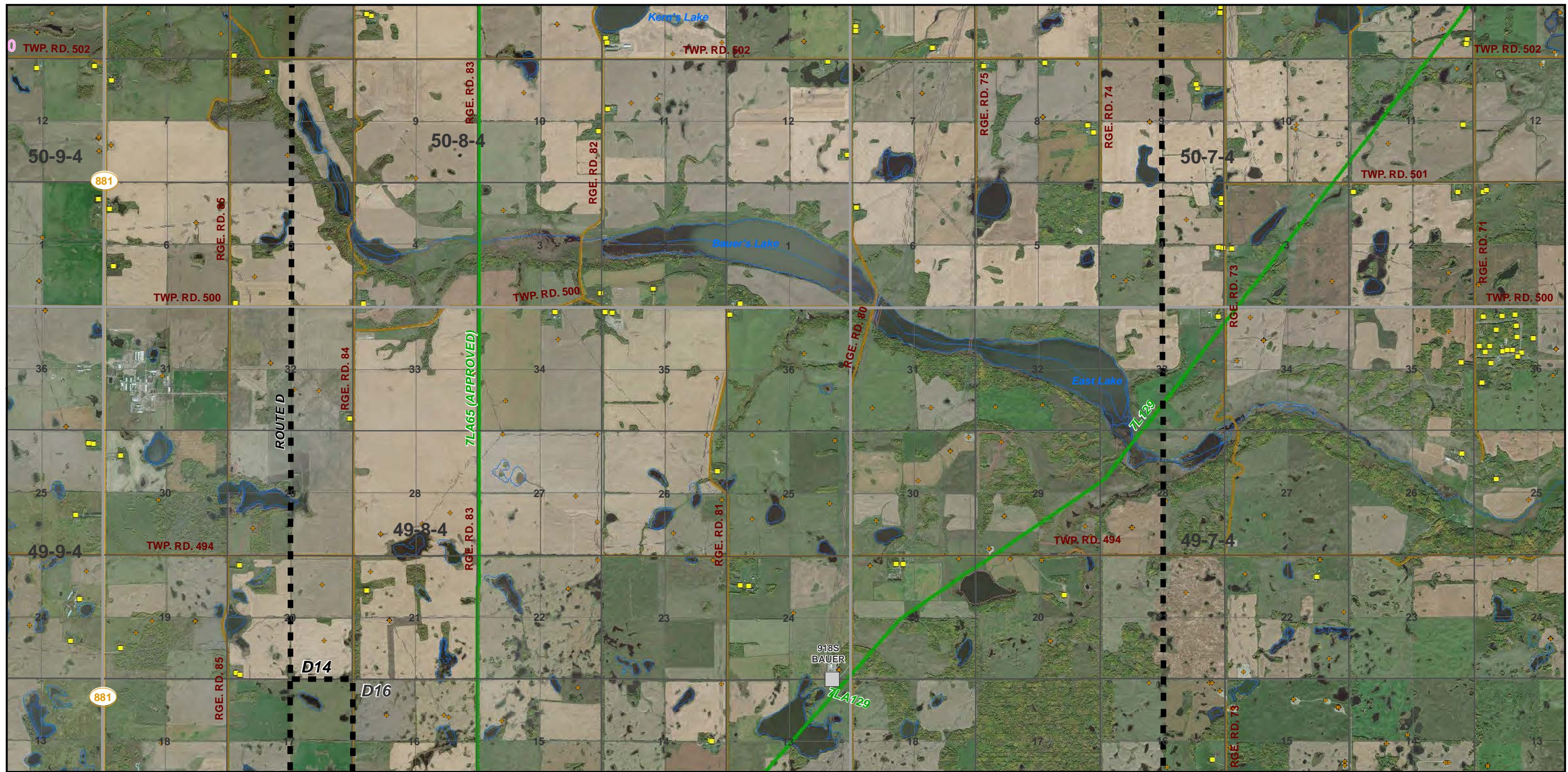
Buffalo Creek Transmission Project
 REVISED POTENTIAL ROUTES
 MOSAIC MAP 5 of 7

October 2020

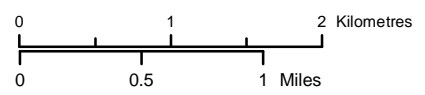
RS-7L333 - N3 - 02e

CREDIT NOTES
 Alberta Data Partnerships, Government of Alberta, Government of Canada, IHS Markit, AltaLink, ATCO, Imagery: DigitalGlobe 2019

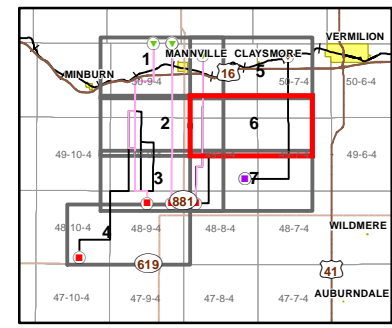
This map is the property of ATCO. This map is not intended to be used in place of Alberta One Call.
 Always practice extreme caution when near power lines!



- ATCO Transmission Line Potential Options
- - - ATCO Rejected Routes
- A1** Potential Route Node
- A1** Rejected Route Node
- Potential Route Start Point
- Potential Route End Point /AltaLink Connection Point
- Rejected Route Start Point
- Rejected Route End Point /AltaLink Connection Point
- Existing/ Approved Substation
- Existing/ Approved 144 kV Transmission Line
- Residence
- + Surface Well Site
- Secondary Highway
- Road
- - - Existing Easement R/W
- Current Disposition
- Waterbody
- Watercourse
- ATCO/ AltaLink Service Territory Boundary



NOTES:
 - Only facilities in the vicinity of the project are shown.
 - Several routes are shown, but only one will be built.



INDEX MAP



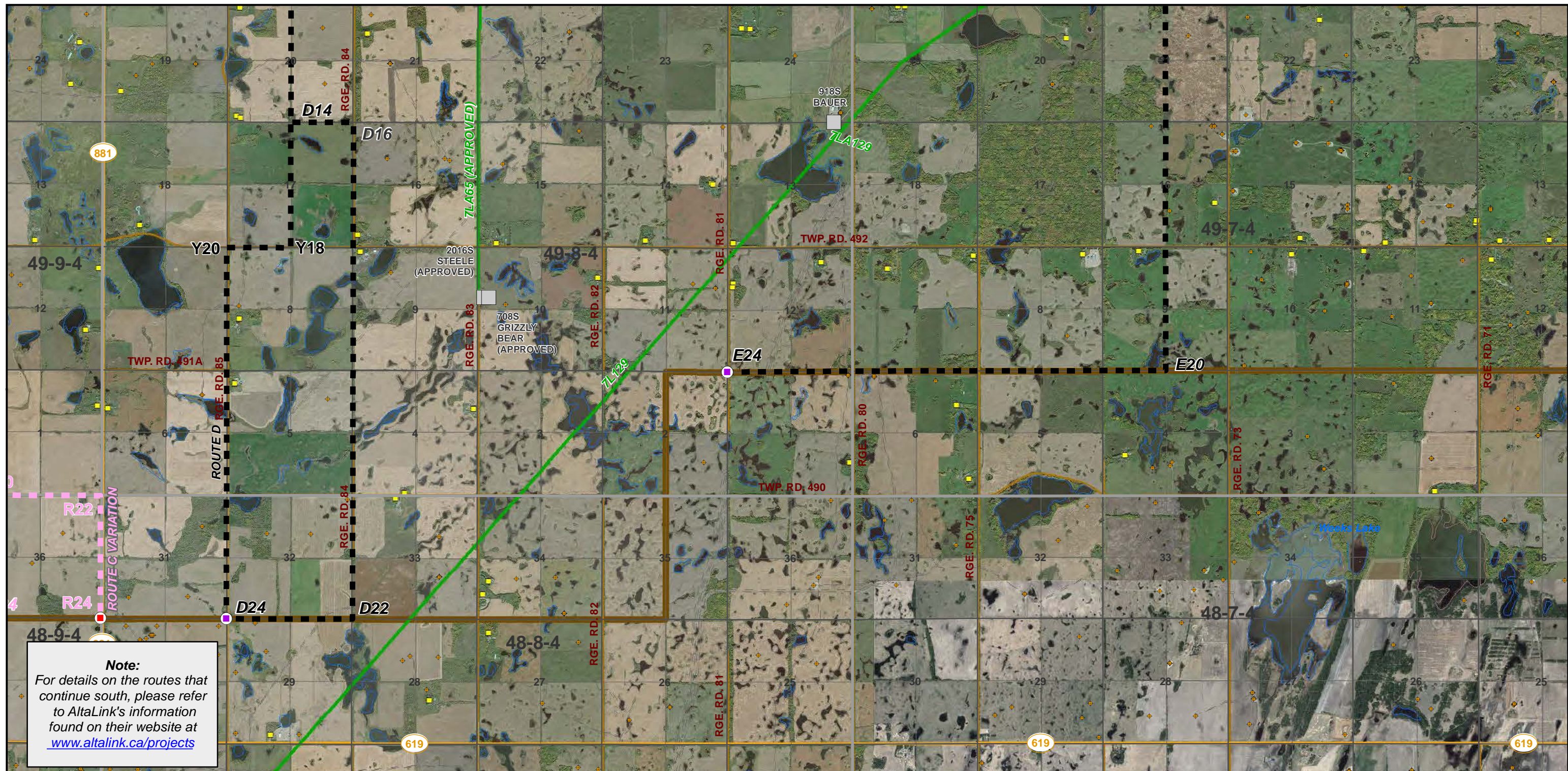
Buffalo Creek Transmission Project
 REVISED POTENTIAL ROUTES
 MOSAIC MAP 6 of 7

October 2020

RS-7L333 - N3 - 02f

CREDIT NOTES
 Alberta Data Partnerships, Government of Alberta, Government of Canada, IHS Markit, AltaLink, ATCO, Imagery: DigitalGlobe 2019

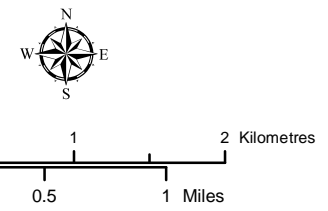
This map is the property of ATCO. This map is not intended to be used in place of Alberta One Call.
 Always practice extreme caution when near power lines!



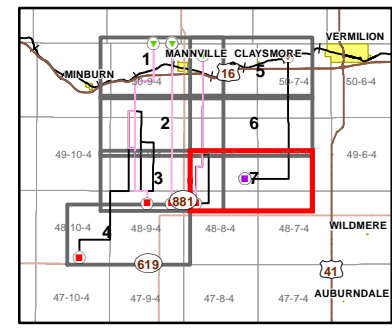
Note:
 For details on the routes that continue south, please refer to AltaLink's information found on their website at www.altalink.ca/projects

- | | |
|--|---|
| ATCO Transmission Line Potential Options | Residence |
| ATCO Rejected Routes | Surface Well Site |
| Potential Route Node | Secondary Highway |
| Rejected Route Node | Road |
| Potential Route Start Point | Existing Easement R/W |
| Potential Route End Point /AltaLink Connection Point | Current Disposition |
| Rejected Route Start Point | Waterbody |
| Rejected Route End Point /AltaLink Connection Point | ATCO/ AltaLink Service Territory Boundary |
| Existing/ Approved Substation | Existing/ Approved 144 kV Transmission Line |

CREDIT NOTES
 Alberta Data Partnerships, Government of Alberta, Government of Canada, IHS Markit, AltaLink, ATCO, Imagery: DigitalGlobe 2019



NOTES:
 - Only facilities in the vicinity of the project are shown.
 - Several routes are shown, but only one will be built.



Buffalo Creek Transmission Project
REVISED POTENTIAL ROUTES
MOSAIC MAP 7 of 7

October 2020

RS-7L333 - N3 - 02g