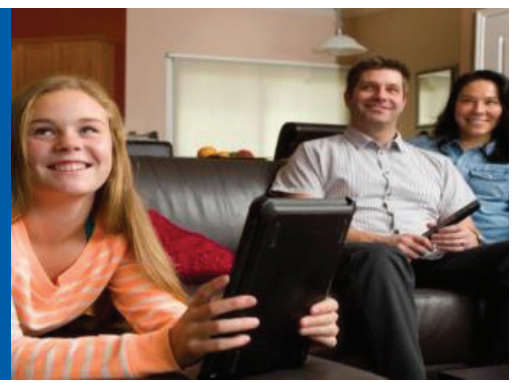


ATCO

SHAPE the conversation



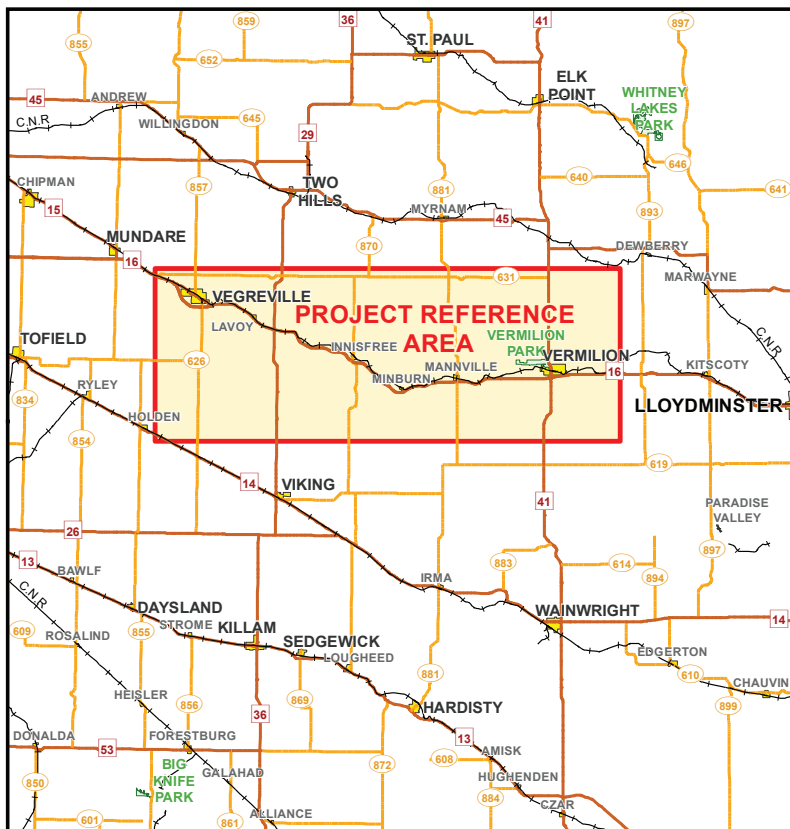
September 2017

7L65 LINE REBUILD PROJECT

This newsletter provides you with information about electric transmission facilities being planned in your area. This package provides important project information and outlines our public consultation process. We invite any comments, questions or concerns you may have.

ATCO Electric Ltd. (ATCO) is proposing to rebuild the existing 7L65 transmission line to allow the facility to operate at full thermal capacity. The proposed 7L65 Line Rebuild Project will consist of new single-circuit 144-kilovolt (kV) transmission line located between the Vegreville substation, south of the Town of Vegreville and the Vermilion substation, located in the Town of Vermilion. This new line will replace the existing 7L65, which is approximately 93 kilometres (km) in length. The existing 7L65 line will be removed once the rebuilt line is operating.

ATCO is seeking your input on how this project may affect you. If you are in the direct vicinity of the planned facilities, ATCO will contact you in the coming weeks.



CREDIT NOTES Alberta Data Partnerships, Government of Canada, IHS Markit

Project Need

The Alberta Electric System Operator (AESO) is an independent, not-for-profit organization responsible for the safe, reliable and economic planning and operation of the provincial transmission grid. The AESO acts in the interests of all Albertans to determine what electrical infrastructure is needed.

As per the AESO's long-term plan, 7L65 is required to continue operating indefinitely at its full capacity. However, 7L65 is currently operating lower than its full capacity due to the age and condition of the line.

7L65 is at the end of its operating life, as well the electrical system in the area is experiencing localized load growth, therefore ATCO is planning a complete replacement of the line to ensure suitable operability into the future.

Included in this package:

- Project fact sheet — The Technical Details
- Open house invitation
- Reference map— reflects the entire project area
- Route mosaic maps— maps are included to your specific land or area interests
- AUC brochure: *Public Involvement in a Proposed Utility Development*
- Reply form and postage paid envelope

LOCAL BENEFITS

Upgrading the transmission system in your area will:

- Improve access to safe, secure and reliable power
- Allow future businesses to connect to Alberta's electric system
- Encourage investment in our province

If you are a local business, and would like to be considered for the ATCO approved vendors list, please contact us toll free at 1-800-668-2248.



Transmission Routes

Prior to consultation with landholders, ATCO develops early route concepts (see *enclosed maps*). In selecting early route concepts, ATCO considers numerous constraints and barriers, including:

- Proximity to residences
- Environmentally sensitive areas
- Wetlands
- Existing infrastructure (i.e. other transmission lines, roads, highways, pipelines, telecommunication towers)
- Planned developments
- Agriculture operations
- Visual factors
- Construction & land acquisition costs
- Quarter and section lines
- Property boundaries & field edges
- Other special considerations (i.e. access roads)

The Process

Our research indicates that you are in the vicinity of the proposed route concepts for the 7L65 Line Rebuild Project. In the coming weeks, ATCO will be contacting you to discuss the project.

Consultation with landholders routinely leads to improvements on our projects. We have adjusted routes, developed new route options and rejected other routes because of conversation with landholders. Your feedback and input will help determine the best possible routes.

We would like to meet with you to gather information about the area and answer any questions you may have.

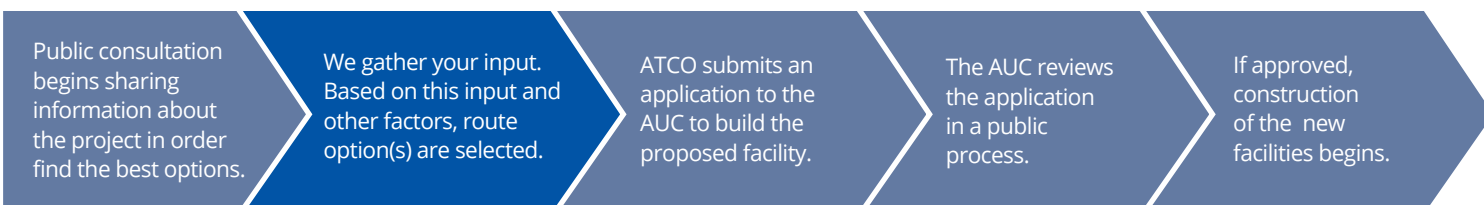
Once this initial consultation phase is complete, ATCO will refine the routes. We will then begin another round of consultations with landowners in the vicinity of the selected route options to gather additional input (see *The Schedule below*).

In developing route options, ATCO must consider a range of route constraints and barriers including proximity to residences (see *Transmission Routes section above*). We undertake extensive studies to understand the potential impacts on wildlife, wetlands and other sensitive areas.

In addition to the in-person and telephone consultations that ATCO will undertake, we invite anyone who is interested in the project to:

- join us at an open house (see *insert for dates and locations*);
- provide feedback and share other information using the enclosed reply form and postage paid envelope; and
- be a part of the conversation. If you have any questions, concerns or other information regarding this project, we want to hear from you.

THE SCHEDULE



PUBLIC CONSULTATION

is a continuous process that occurs throughout the life of the project.

Access Trails and Temporary Workspace

Access trails may be required in areas where terrain conditions or the presence of wetlands make driving along the right-of-way impractical. In some situations, access trails will be temporary. Permanent access trails may be needed for ongoing maintenance in some areas. If required, temporary and permanent access trails will be approximately six to 15 metres (m) wide.

In addition, temporary workspace may be required along the edge of the right-of-way and in other selected locations. If needed, this temporary workspace will be used to install the structures and string the transmission line. At corners or locations where the line bends, additional areas may be required to string the transmission line and accommodate the movement of equipment. This temporary workspace may extend beyond the right-of-way by up to 120m by 18m. The exact locations of all temporary workspaces and structures have yet to be determined, and dimensions may vary with final plans.

Arrangements for temporary workspace will be discussed and negotiated with landowners individually.



Typical Current Structure



Typical Planned Structure

The Right-of-Way

The term right-of-way refers to the area a transmission line uses including areas on either side of the line. Rights-of-way must have a minimum width to ensure safety and ongoing access for maintenance.

For safety reasons, some general restrictions on the use of the land in the direct vicinity of the transmission line may apply. These include setbacks for development.

Details including width and position of the right-of-way will depend on the type and size of the required structure, existing land use, surrounding features and other factors.

The right-of-way will follow property boundaries if feasible and in some situations, will follow existing features like a road, pipeline or another power line.

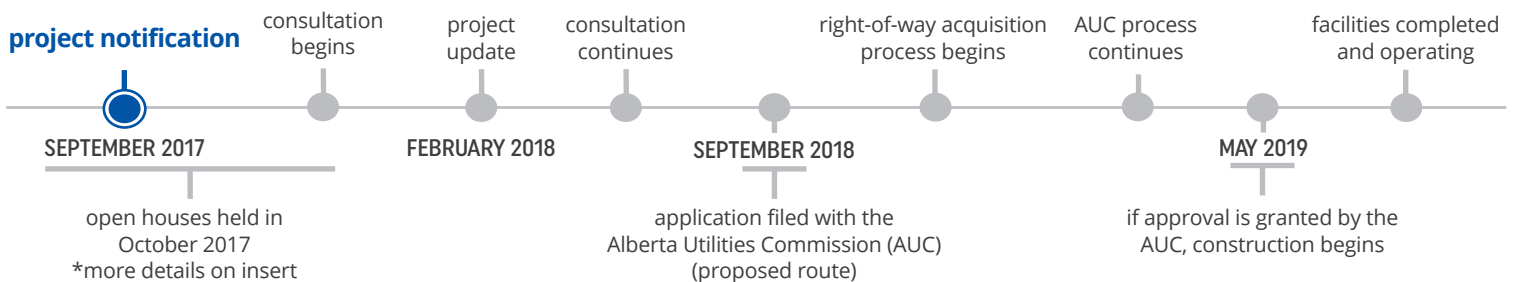
The typical width of the right-of-way for this project is 18 m (9 m when following a road).

Once a proposed route has been submitted to the AUC, ATCO begins coordinating agreements with landholders to acquire right-of-way. Once a right-of-way is constructed, landholders may continue to use the

right-of-way subject to the terms of agreements made between the landholder and ATCO.

Construction of this project is planned to occur in up to three phases, separated into regional sections of line. The exact timing and location of each phase has yet to be determined, as is the timing of decommissioning and salvage of the existing 7L65 line. Details regarding the construction of this project will be shared with directly affected landholders at a later date when plans are finalized.

project notification



CONTACT INFORMATION

Your comments and concerns are important to us. Please contact us if you would like to learn more about this project, or if you would like to share information with us.

Call us toll free at 1-855-420-5775
or contact the project planner directly:

Nathan Jones

Right-of-Way Planning
ATCO
2nd Floor, 10035-105 Street
Edmonton, AB T5J 2V6

Phone: 780-420-4184

Email: consultation@ATCOelectric.com

Website: www.atcoelectric.com

Fax: 780-420-5030

Alberta Electric System Operator (AESO)

Phone: 1-888-866-2959

Email: stakeholder.relations@aeso.ca

Alberta Utilities Commission (AUC)

Phone: 780-427-4903

(for toll-free, dial 310-0000 first)

Email: consumer-relations@auc.ab.ca



Approval Process

Approval Process

Alberta's electrical system is regulated by the Alberta Utilities Commission (AUC), an independent agency of the province that ensures the fair and responsible delivery of utility services. Before ATCO can begin construction on this project, the AUC must approve the facility application, which includes details such as location of electric transmission facilities and proposed alterations. For more information about how you can participate in the AUC approval process, please refer to the enclosed AUC brochure, *Public Involvement in a Proposed Utility Development*.

Next Steps

Next Steps

The consultation process for this project is ongoing. Please let us know if you have questions, concerns or suggestions regarding this project. You can provide feedback and share other information using the enclosed reply form and postage paid envelope, by contacting us (toll free) at 1-855-420-5775 or by emailing us at consultation@ATCOelectric.com.

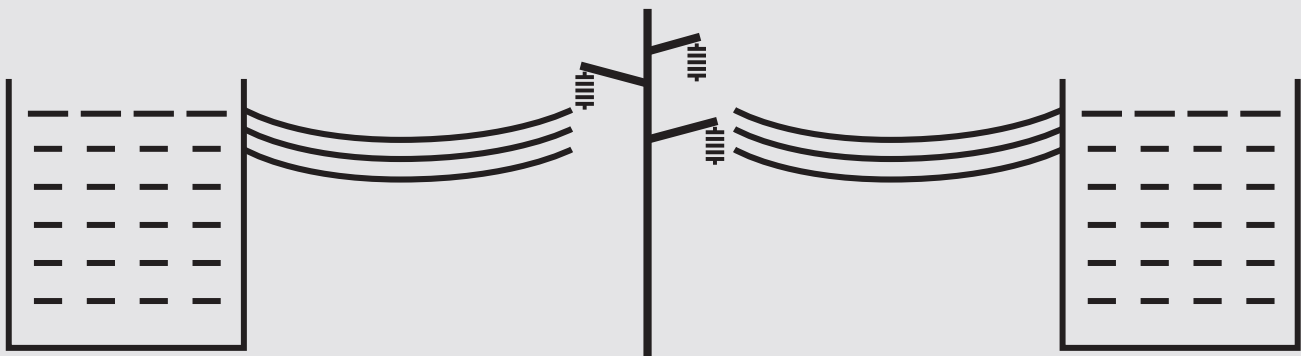
ATCO

The Technical Details

September 2017

7L65 LINE REBUILD PROJECT

The technical details of facilities associated with the 7L65 Line Rebuild Project are described in this fact sheet. Designs may vary as plans are finalized.



Existing Vegreville 709S Substation

This project will require no upgrades to the existing Vegreville substation (called 709S). The substation is located approximately one kilometre (km) south of the Town of Vegreville, in the southwest quarter of Section 7-52-14 W4M.

New 144-kV Transmission Line

We are planning to build a new transmission line to replace the existing 7L65 line connecting the Vegreville substation with the Vermilion substation. The new line will also be called 7L65. The old existing line will be decommissioned and salvaged upon completion of the project.

Existing Vermilion 710S Substation

This project will require no upgrades to the existing Vermilion substation (called 710S). The substation is located in the Town of Vermilion, in the northwest quarter of Section 32-50-6 W4M.

THE DETAILS

If approved, the transmission line will be 144 kilovolts (kV) and approximately 95 - 120 km long. The line will consist of:

- Three conductor wires
- One overhead shield wire
- A 'Davit Arm' structure

The typical structure is described in more detail on the back of this fact sheet.

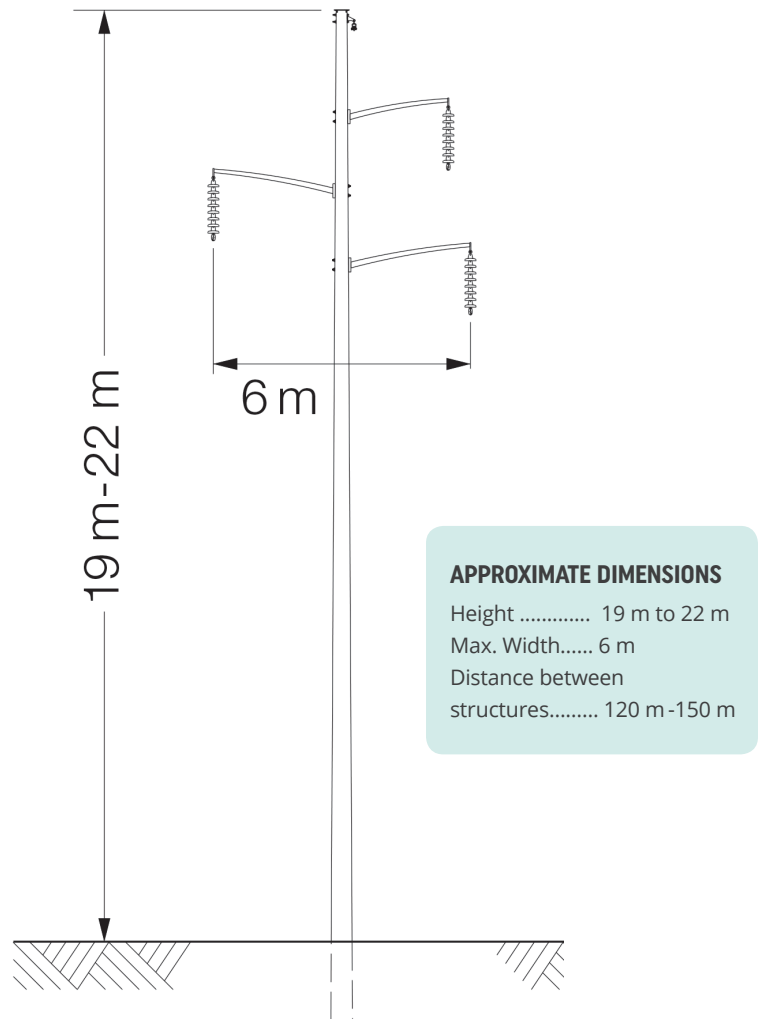
What It Will Look Like

If approved by the Alberta Utilities Commission, the 144-kilovolt (kV) transmission line will be built with single-circuit 'Davit Arm' structures similar to the one shown here.

Structures will be single-circuit. This means that they will have one set of three wires strung across them. One overhead shield wire will be strung at the top of the structures to protect the line from lightning. The distance between structures will range from 120 metres (m) to 150 m.

Non-typical structures with wider bases and/or guy wires and anchors may be required where the line ends or bends, at corners and to go over and around obstacles. In all cases, minimum clearance will meet or exceed the requirements of provincial safety regulations.

**Details may change as the project develops and designs are finalized.*



Typical right-of-way width for this project - 18 metres

Rights-of-way are cleared of trees, bush and debris to allow access for construction and ongoing maintenance.

Definitions

Circuit: A circuit is a group of wires electricity flows through. ATCO's transmission lines can be single or double circuit. A single-circuit line has three wires and a double-circuit line has six. A transmission line may also have one or two shield wires on the top of the structures to protect the line from lightning.

Circuit breaker: A circuit breaker is an automatic switch that is designed to protect an electrical circuit from overloading by shutting off the flow of electricity.

Consultation: A consultation is a meeting where advice, information and views are exchanged.

Kilovolt (kV): A kilovolt is equal to one thousand volts. This unit of measurement is most commonly used when describing transmission and distribution lines.

Distribution and transmission lines in Alberta carry between 4-kV (4,000 volts) and 500-kV (500,000 volts).

Right-of-way: A right-of-way is the use of a strip of land acquired for the construction and operation of a transmission line. The term right-of-way is also used to refer to the physical space a transmission line encompasses including areas on either side of the line.

Termination: A termination is the point where a power line ends and connects to a substation.

ATCO



Join Us

at Our Open House

ATCO is hosting open houses for the 7L65 Line Rebuild Project

This project is planning to rebuild the existing 144 kV transmission line called 7L65. The transmission line is approximately 93 km long and is between Vegreville and Vermilion areas.

Your feedback on the project is important to us. We encourage you to learn more or provide your input by attending one of our open houses (listed on the back), visiting our website or by contacting us.

1-855-420-5775 | consultation@ATCOelectric.com | www.ATCOelectric.com

*Please join us at any of the open houses listed below
between 4 p.m. and 8 p.m.*

Vermilion — Tuesday, October 3, 2017

Vermilion Regional Centre, Hall A
5702 College Drive, Vermilion

Innisfree — Wednesday, October 4, 2017

Innisfree Recreation Centre
5024 - 54 Street, Innisfree

Vegreville — Thursday, October 5, 2017

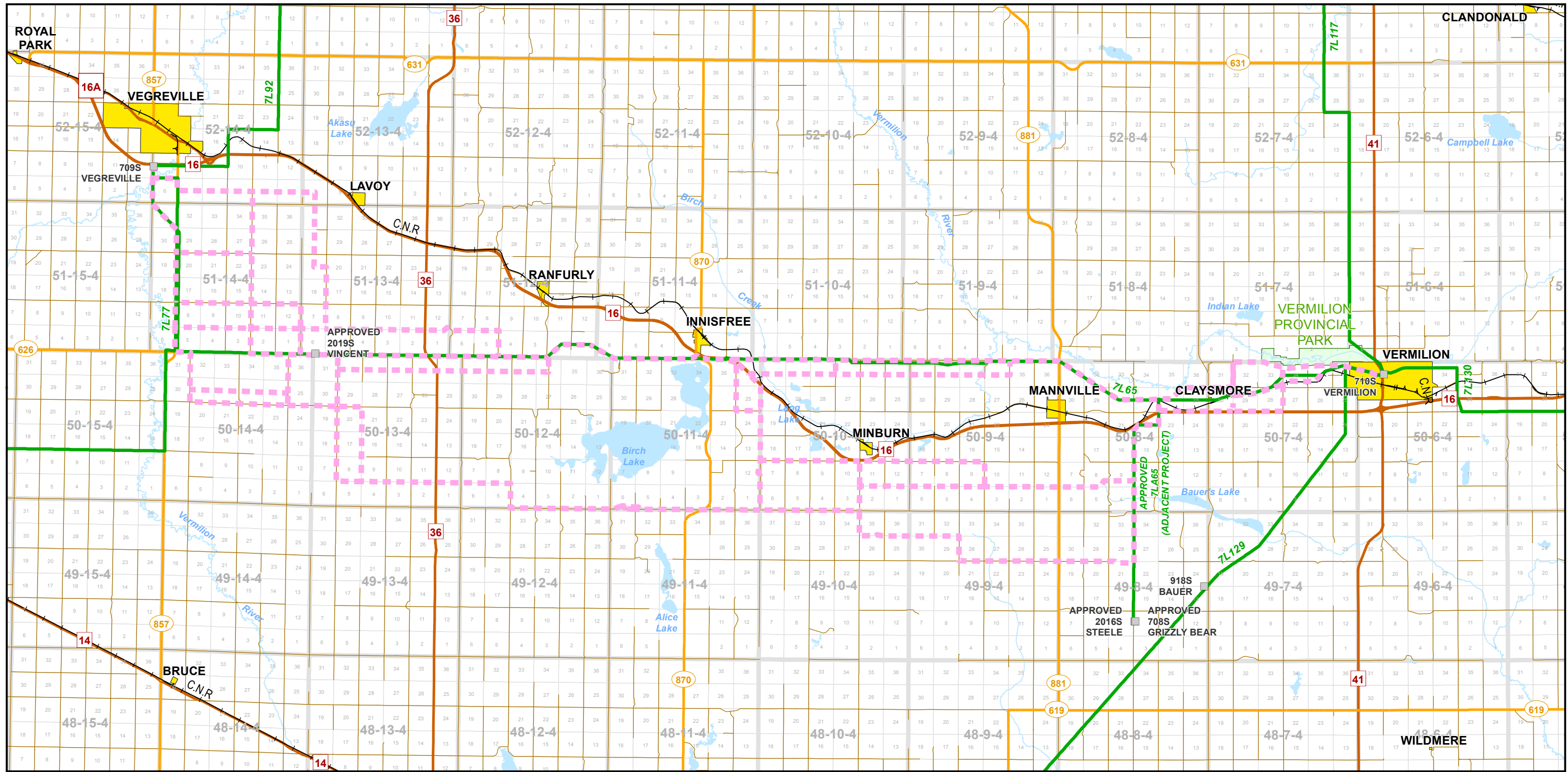
Social Centre Hall, Hall B
4802 - 47A Street, Vegreville



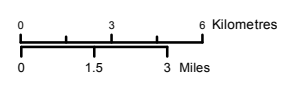
1-855-420-5775 | consultation@ATCOelectric.com

<http://www.ATCOelectric.com/Projects/ProjectPages/7L65-line-rebuild>

www.ATCOelectric.com



- 144 kV Transmission Line Route Concepts
- Existing/ Approved 144 kV Transmission Line
- Primary Highway
- Secondary Highway
- Road
- Railway
- Town/ Village
- Provincial Park
- Waterbody
- Watercourse



NOTES:
 - Only facilities in the vicinity of the project are shown.
 - Several routes are shown, but only one will be built.

This map is the property of ATCO. This map is not intended to be used in place of Alberta One Call.
 Always practice extreme caution when near power lines!

ATCO

7L65 Line Rebuild Project

REFERENCE MAP

September 2017

RS-7L65 - N1 - 01