

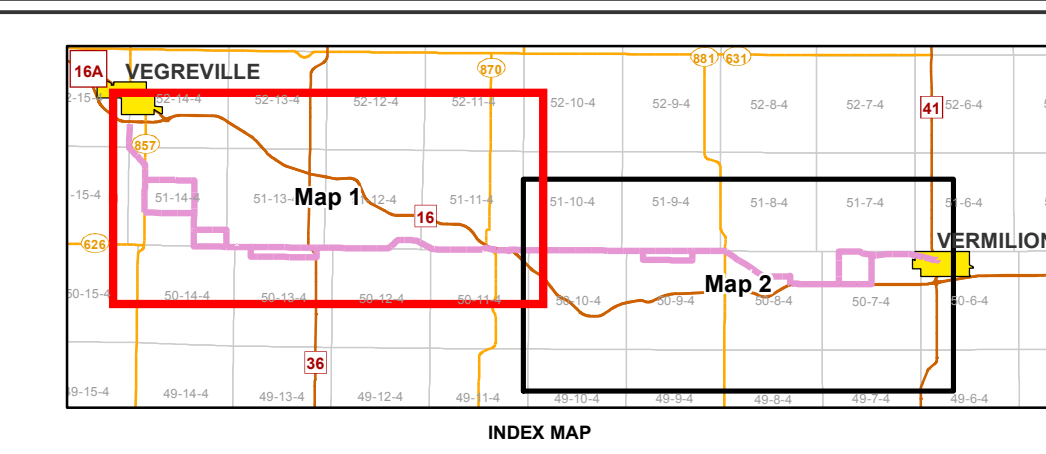
— Proposed 144 kV Routes
 Existing/ Approved Substation
— Existing/ Approved 144 kV Transmission Line
— Primary Highway
— Secondary Highway
— Road
— Railway
 Town/ Village
 Provincial Park

Waterbody
— Watercourse

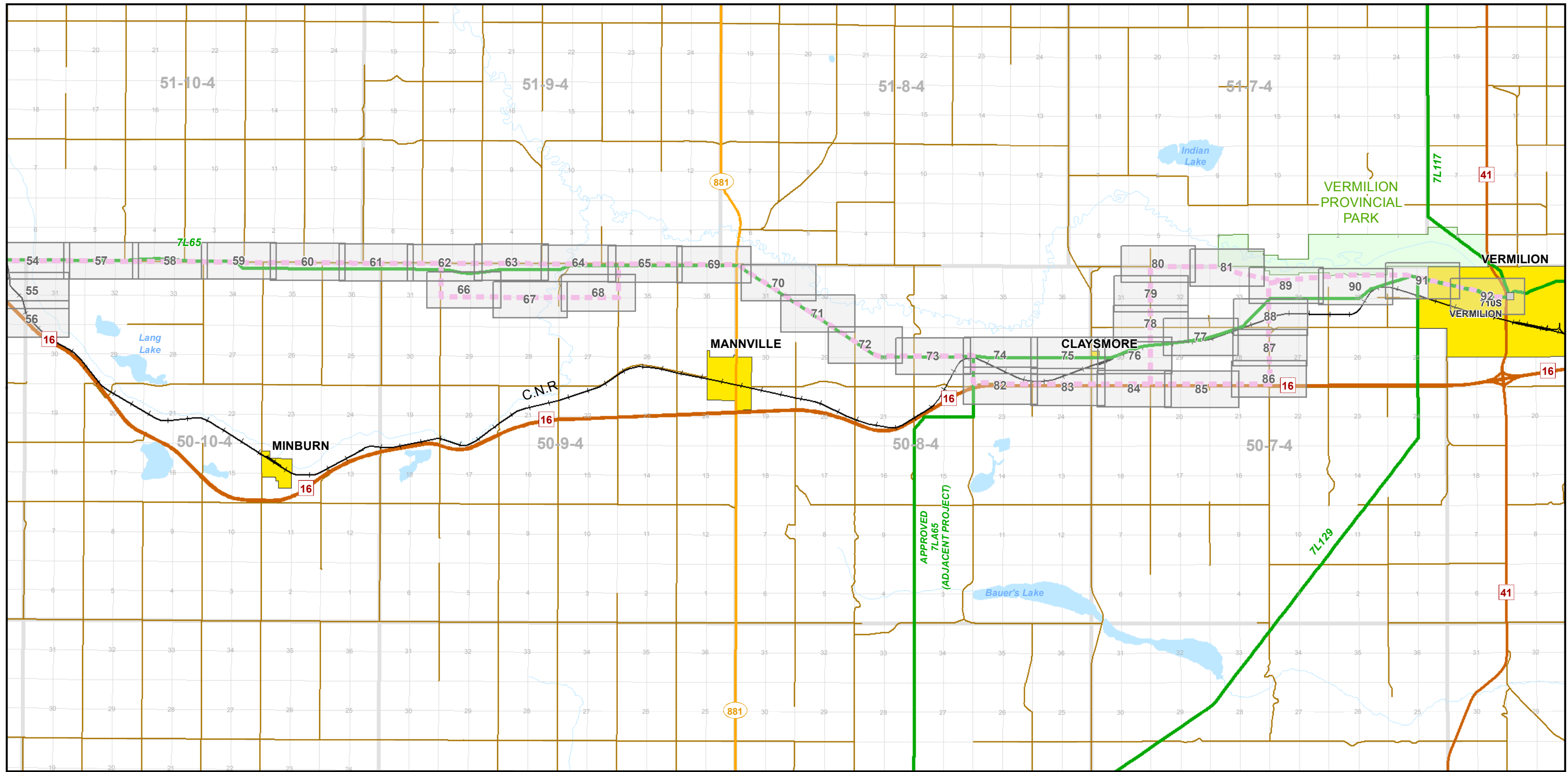
CREDIT NOTES
 Alberta Data Partnerships, Government of Alberta, Government of Canada, IHS Markit

NOTES:
 - Only facilities in the vicinity of the project are shown.
 - Several routes are shown, but only one will be built.

This map is the property of ATCO. This map is not intended to be used in place of Alberta One Call.
 Always practice extreme caution when near power lines!

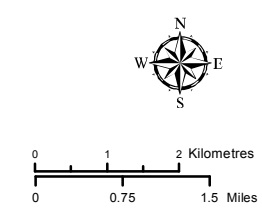


7L65 Line Rebuild Project
FACILITY DETAIL OVERVIEW MAP
MAP 1 of 2
 July 2018
 RS-7L65 - N3 - 03a



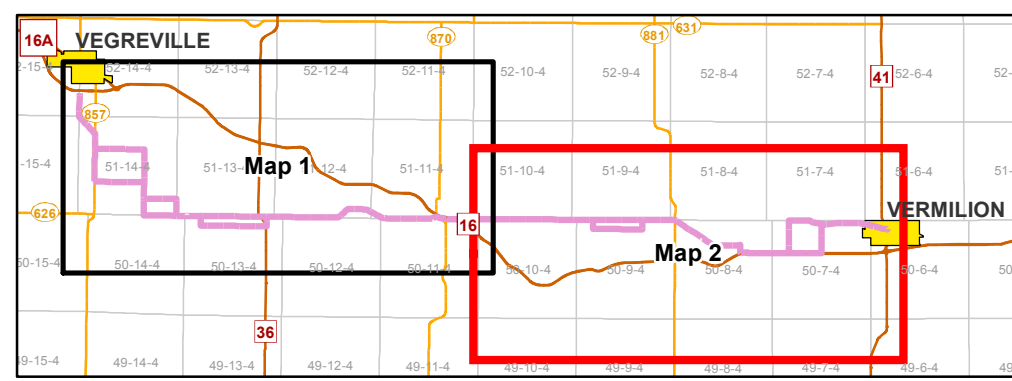
- Proposed 144 kV Routes
 - Existing/ Approved Substation
 - Existing/ Approved 144 kV Transmission Line
 - Primary Highway
 - Secondary Highway
 - Road
 - Railway
 - Town/ Village
 - Provincial Park
- CREDIT NOTES**
 Alberta Data Partnerships, Government of Alberta, Government of Canada, IHS Markit

- Waterbody
- Watercourse



NOTES:
 - Only facilities in the vicinity of the project are shown.
 - Several routes are shown, but only one will be built.

This map is the property of ATCO. This map is not intended to be used in place of Alberta One Call.
 Always practice extreme caution when near power lines!



INDEX MAP



7L65 Line Rebuild Project
FACILITY DETAIL OVERVIEW MAP
MAP 2 of 2

July 2018

RS-7L65 - N3 - 03b